

The

Volume 7, No. 2

June 2009

SEDIMENTARY

A publication of SEPM Society for Sedimentary Geology
with the Sedimentary Geology Division of GSA

Record

INSIDE: A NEW TWIST ON MUD DEPOSITION -
MUD RIPPLES IN EXPERIMENT AND ROCK RECORD

PLUS: RESEARCH CONFERENCES
PRESIDENT'S COMMENTS
SEPM ACTIVITIES AT THE DENVER ANNUAL MEETING



SEPM BOOKSTORE

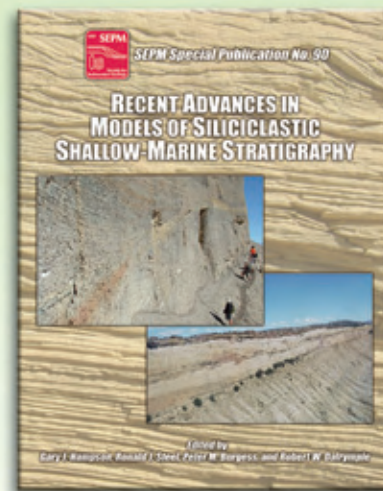
Special Publication #90

Recent Advances in Models of Siliciclastic Shallow-Marine Stratigraphy

Edited by: Gary J. Hampson, Ronald J. Steel, Peter M. Burgess

Siliciclastic shallow-marine deposits record the interface between land and sea, and its response to a variety of forcing mechanisms: physical process regime, the internal dynamics of coastal and shelf depositional systems, relative sea level, sediment flux, tectonic setting, and climate. These deposits have long been the subject of conceptual stratigraphic models that seek to explain the interplay between these various forcing mechanisms, and their preservation in the stratigraphic record. This volume arose from an SEPM research conference on shoreline-shelf stratigraphy that was held in Grand Junction, Colorado, on August 24-28, 2004. The aim of the resulting volume is to highlight the development over the last 15 years of the stratigraphic concepts and models that are used to interpret siliciclastic marginal-marine, shallow-marine, and shelf deposits.

Catalog #40090 • SEPM Member Price: \$95.00



Now available in CD ROM SEPM Special Publications from No. 10 through No. 73

Please visit the SEPM Website for a complete listing and order by contacting SEPM directly.

SEPM Member Price: 1-5 CDs @ \$20 each

6-10 @ \$18 each

> 10 @ \$15 each

Non-Member Price: 1-5 @ \$28 each

6-10 @ \$25 each

> 10 @ \$21 each

Libraries should call SEPM directly for larger quantity discounts.

SEPM Field Trip Guide Book #10

Stratigraphic Evolution of Deep-Water Architecture: Examples of controls and depositional styles from the Magallanes Basin, southern Chile

Edited by: Andrea Fildani, Stephen M. Hubbard, and Brian W. Romans
With contributions from: J.A. Covault, W.H. Crane, A. Bernhardt, Z.R. Jobe,
D.A. Armitage, J.C. Fosdick, M.R. Shultz, J. Clark, D.R. Lowe, and S.A. Graham

This large format (11 x 17 inch) all color outcrop atlas and field guide was produced for the SEPM Research Conference held in Chile in February, 2009. It contains a wealth of information on the world class deep water outcrops of the Cretaceous of the Magallanes Basin in the Ultima Esperanza District, Chilean Patagonia. These outcrops have been the object of intense study for many years beginning with the early Chilean pioneer geologists, petroleum company researchers and most recently Stanford University, among others. With an introductory and overview section and then a more detailed contribution section, this book covers the significant outcrops in the region, including the Punta Barrosa Formation, Cerro Toro Fm., and the Tres Pasos Fm. Color photo mosaics, diagrams and maps show channel complexes, channel margin details, clastic injectites, sheet complexes, slope deposits, mass transport deposits and slope minibasin fills. With the detailed descriptions and overviews, the authors communicate how the deposits fit into the basin and the complex deep water architecture of this basin.

Catalog #80010 • Non-Member Price: \$49 • SEPM Member Price: \$35 • SEPM Student Member Price: \$25.





Cover photo: Image shows a sediment bed produced by a flume experiment. The sediment is pure, fine grained kaolinite clay, and the clay bed is slightly grooved from a prior erosional episode. Internally, the clay bed consists of overriding floccule ripples, and during the final depositional episode it was covered by barchan-shaped ripples (3-5 cm wide and 5-7 cm's long). These barchans were constructed from bedload-transported clay floccules (flow velocity 20-25 cm/s, effective flow depth 5 cm; Schieber et al., 2007). The flow direction indicated by the ripples is from left to right.

CONTENTS

- 4** A New Twist on Mud Deposition -
Mud Ripples in Experiment and Rock Record
- 9** Research Conference
*Application of Seismic Geomorphology Principles
to Continental Slope and Base-of-slope Systems*
- 10** President's Comments
SEPM - Going Forward
- 11** Research Conference
Salt tectonics, sediments and prospectivity

The Sedimentary Record (ISSN 1543-8740) is published quarterly by the Society for Sedimentary Geology with offices at 4111 S. Darlington, Suite 100, Tulsa, OK 74135-6373, USA.

Copyright 2009, Society for Sedimentary Geology. All rights reserved. Opinions presented in this publication do not reflect official positions of the Society.

The Sedimentary Record is provided as part of membership dues to the Society for Sedimentary Geology.

Editors

Steven Goodbred

Vanderbilt University, Dept of Earth and Environmental Sciences, Nashville, TN 37235
<steven.goodbred@vanderbilt.edu>

Molly Miller

Vanderbilt University, Dept of Earth and Environmental Sciences, Nashville, TN 37235
<molly.f.miller@vanderbilt.edu>

David Furbish

Vanderbilt University, Dept of Earth and Environmental Sciences, Nashville, TN 37235
<david.j.furbish@vanderbilt.edu>

SEPM Staff

4111 S. Darlington, Suite 100, Tulsa, OK 74135-6373

Phone (North America): 800-865-9765

Phone (International): 918-610-3361

Dr. Howard Harper, Executive Director

<hharper@sepm.org>

Theresa Scott, Associate Director & Business Manager

<tscott@sepm.org>

Bob Clarke, Publications Coordinator

<rclarke@sepm.org>

Michele McSpadden, Publication & Technology Coordinator

<mmspadden@sepm.org>

Janice Curtis, Membership Associate

<jcurtis@sepm.org>

Edythe Ellis, Administrative Assistant

<eellis@sepm.org>

SEPM Council

Dale Leckie, President

dale_leckie@nexeninc.com

Steve Driese, President-Elect

Steven_Driese@baylor.edu

John Snedden, Secretary-Treasurer

john.w.snedden@exxonmobil.com

André Strasser, International Councilor

andreas.strasser@unifr.ch

James MacEachern, Councilor for Paleontology

jmaceach@sfu.ca

Lynn Soreghan, Councilor for Sedimentology

lsoreg@ou.edu

John Holbrook, Councilor for Research Activities

holbrook@uta.edu

Paul McCarthy, Co-Editor, JSR

mccarthy@gi.alaska.edu

Gene Rankey, Co-Editor, JSR

grankey@ku.edu

Stephen Hasiotis, Co-Editor, PALAIOS

hasiotis@ku.edu

Edith Taylor, Co-Editor, PALAIOS

etaylor@ku.edu

Don McNeill, Co-Editor, Special Publications

dmcneill@rsmas.miami.edu

Gary Nichols, Co-Editor, Special Publications

g.nichols@gl.rhul.ac.uk

Tim Carr, President, SEPM Foundation

tim.carr@mail.wvu.edu

www.sepm.org

A New Twist on Mud Deposition - Mud Ripples in Experiment and Rock Record

Jürgen Schieber and Zalmay Yawar

Department of Geological Sciences, Indiana University, Bloomington, IN 47405

ABSTRACT

Recent flume experiments with muddy suspensions have demonstrated that low-energy settings are not a prerequisite for the accumulation of muds and shales. Flocculation produces deposition-prone aggregates even in freshwater, and these floccules form bedload ripples at flow velocities that would also produce ripples in sandy sediments. Floccule ripples are cross-laminated but have a much higher water content (80-90 % by volume) than sand ripples and are thus subject to substantial compaction. Because of this, we must expect that original cross-laminae become severely flattened and are difficult to recognize in the rock record. Nonetheless, a survey of ancient shales has shown that certain intrinsic features of cross-lamination, such as basal downlap and top truncation of laminae, are still recognizable and allow identification of current-deposited muds. The example of the Cambrian Eau Claire Formation is used to illustrate how this approach can change our perception of the depositional setting of certain mudstone successions.

INTRODUCTION

The traditional axiom on the deposition of mud, promulgated in numerous contemporary text books, asserts that deposition of mud primarily occurs in environments with weak currents. Yet, some observations have long indicated the possibility of mud accumulation in more energetic settings (e.g., Rine & Ginsburg 1986; Walker & Harms 1971; Schieber 1998), and suggest that the longevity of this axiom owes more to a lack of data than to a preponderance of fact.

Flume experiments on the deposition of mud and clay have now demonstrated that quiescent conditions are not a prerequisite of mud accumulation. Swift moving (15-30 cm/s) muddy suspensions are prone to flocculate over a wide range of salinities and sediment compositions, and the flocculated material travels as bedload in the form of floccule ripples (Fig. 1; Schieber et al. 2007). In these experiments step-wise reduction of flow velocity results in successive re-equilibration of the flow towards a new dynamic balance between flocculated clay in bedload and clay remaining in suspension. At some point a velocity is reached below which a linear decline of suspended sediment concentration occurs until the bulk of particulates has settled out of the flow. This velocity is termed the *critical velocity of sedimentation* (Schieber et al., 2007), and its value increases with the suspended sediment concentration of the flow. Given sufficient sediment supply, floccule ripples accrete into continuous mud beds.

FLUME STUDIES

We visualized ripples by shining strong lights through the turbid and milky looking clay suspensions, and then observing and recording from below their projections on the transparent flume bottom (Fig. 1A). In this way we were able to document the movement of flocculated clays in association with boundary layer streaks and as ripples. We also succeeded to directly observe sediment transport across floccule ripples and how sediment accreted on the lee sides of ripples (Schieber and Southard, 2009).

A large portion of the bedload floccule freight is moved over the stoss-side of the ripples in boundary layer streaks, temporarily accumulates on the crest, and then avalanches down the lee-side once enough sediment has accumulated (Fig. 2). Lee-side sediment movement occurs in the form of multiple and overlapping sediment lobes that over time build up composite foresets. The gravity-driven sediment lobes spread out at the toe of the slope and form rounded lobes that we are able to see through the flume bottom (Schieber et al., 2007).

Migration rates of floccule ripples vary non-linearly with flow velocity. They range from ~20 cm/hour at a flow velocity of 15 cm/s, increasing by a factor of three to ~60 cm/hour with a doubling of flow velocity at 30 cm/s (all at 5 cm flow depth). The latter rates are still approximately 3 to 4 times slower than those of comparable sand ripples because of the fundamentally cohesive nature of floccule ripples.

As they migrate, floccule ripples have a cross-section that is quite similar to that of sandy ripples (Fig. 2) and show downcurrent dipping cross-laminae. In uncompacted clay beds these cross laminae are readily observed, and we have also visualized lateral accretion through injection of pigment pulses during experiments (Fig. 3A). In plan view the ripple cross-lamination is manifest via rib and furrow structure (Fig. 3B).

Fundamentally, these experiments indicate that many long-held assumptions about mud deposition and mudstones do not reflect physical realities. One may wonder of course how much this helps us to interpret the rock record. Because floccule ripples initially consist to between 80 and 90 percent by volume of water, the originally inclined cross-laminae are largely oriented parallel to bedding after compaction. Also, because these ripples are spaced 10 or more centimeters apart, in a thin section what once was a cross-laminated mud, would most likely be described as parallel laminated. So, where do we go from here?

Fortunately, there are some intrinsic features associated with cross-lamination that should be detectable through careful examination of rocks. For example, in the case of a large enough

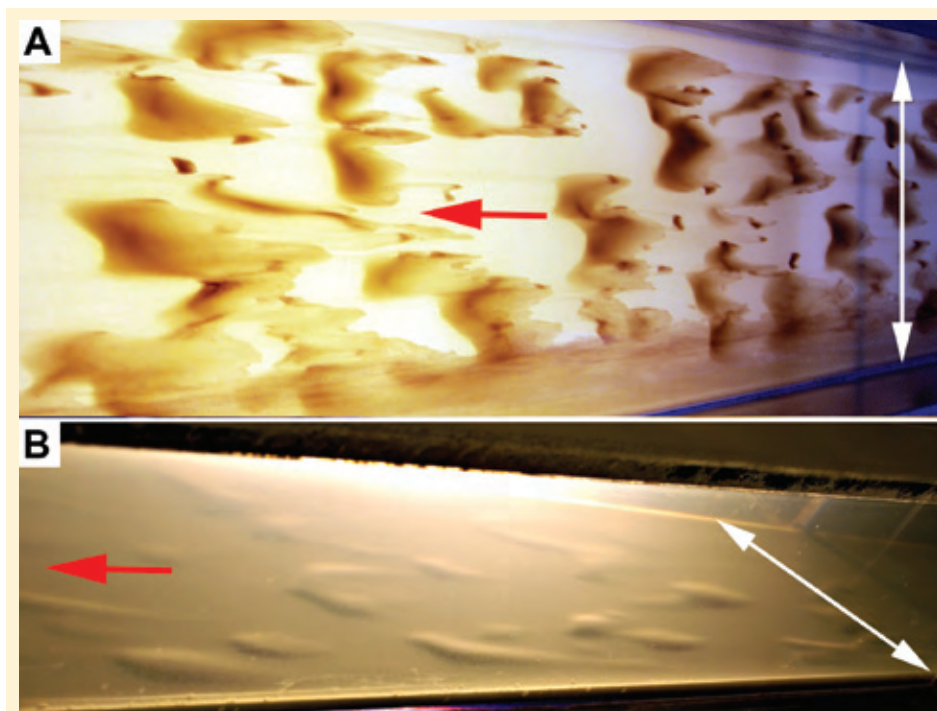


Figure 1. Viewing floccule ripples in the flume channel. (A) Floccule ripples as seen through the flume bottom with backlighting, they are migrating right to left. (B) Oblique side-view of ripples (same experiment as in A). Ripples are draped by a thin blanket of residual suspended clay that settled after the flow was stopped. Red arrows indicate flow direction, white double arrows indicate width of channel (25 cm).

specimen one may find laminae that downlap onto a basal surface or may show updip truncation. We looked for these features in a variety of ancient shale successions, and were able to identify them in rocks from a wide range of ages. We show here some particularly striking examples from the Cambrian Eau Claire Formation in the subsurface of Indiana that were found in the course of Zalmay Yawar's Masters thesis research.

ROCK RECORD

The Upper Cambrian Eau Claire Formation of Indiana consists of fine to very fine-grained quartzitic sandstone that is interbedded with variably colored shales (Ostrom, 1970). Intervals of very fine to fine dolomitic sandstone and siltstones with glauconite are also common. The Eau Claire shales are typically dark gray, but in places they are also green, maroon and micaceous. In the studied cores the Eau Claire Formation overlies the Mt. Simon Sandstone and is in turn overlain by the Galesville Sandstone in north-western Indiana, and by the Davis formation in north-eastern Indiana. The thickness of the Eau Claire ranges from about 120 m in north eastern Indiana to more than 300 m in the south western parts of the state.

Wire line logs of the Eau Claire show considerable variability from county to county, reflective of strong lateral variability of lithofacies as seen in cores.

The examined portion of the Eau Claire Formation is a storm-dominated epicontinental shelf succession (Wasinee

et al., 2008). Sandstone-dominated intervals show well developed hummocky cross-stratification (HCS) in thicker beds (5-20 cm thick), and wave-ripple cross-lamination, grading, and graded rhythmites in thinner beds. Shale-dominated intervals show thin, sharp-based sandstone beds with wave-ripple cross-lamination, grading, and parallel lamination on the coarse end of the grain-size spectrum. Shale beds with fine silt laminae, graded silt-clay couplets, mud-blankets, and variable bioturbation are typical for the fine portion of the grain-size spectrum. Similar sedimentary structures are also found in modern storm-dominated shelf muds (Reineck et al., 1967; Reineck and Singh, 1972; Aigner and Reineck, 1982; Johnson and Baldwin, 1996).

Aigner and Reineck (1982) suggested that in the case of the North Sea, wind-induced gradient currents were the cause for offshore transport of sand during storms. With regard to mud-rich deposits, they followed earlier interpretations and ascribed them to deposition from storm-wave driven suspension clouds (Reineck et al., 1967; Gadow and Reineck, 1969; Reineck and Singh, 1972). However, careful re-examination of the original plates of early North Sea work (e.g., Reineck et al., 1967; Gadow and Reineck, 1969) suggests that there are low angle inclined laminae in these muddy storm deposits, and that simple settling from suspension does not fully explain the preserved sediments.

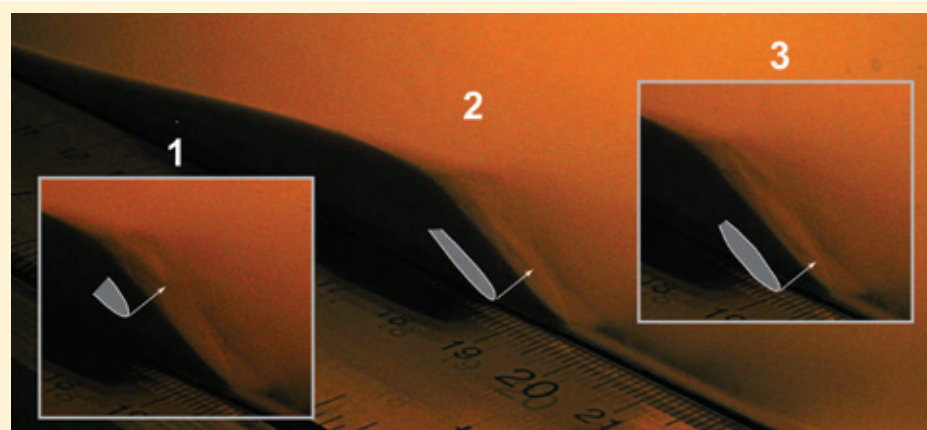


Figure 2. Oblique view of a floccule ripple that became attached to the flume wall during the experiment. Inserts show a time series of the foreset just a few seconds before (time marker 1) and after (time marker 3) the main image (time marker 2) was taken. The image sequence shows the movement of a sediment avalanche (i.e., a flow of clay floccules) down the foreset slope. The shape of the flow is shown as a gray drawing that is offset from the actual lobe in each image, with the arrow pointing to base of the avalanche. Note the downslope movement of avalanche base between images 1, 2, and 3. The cross-section of the ripple is quite comparable to that of sand ripples. The ruler has centimeter subdivisions.

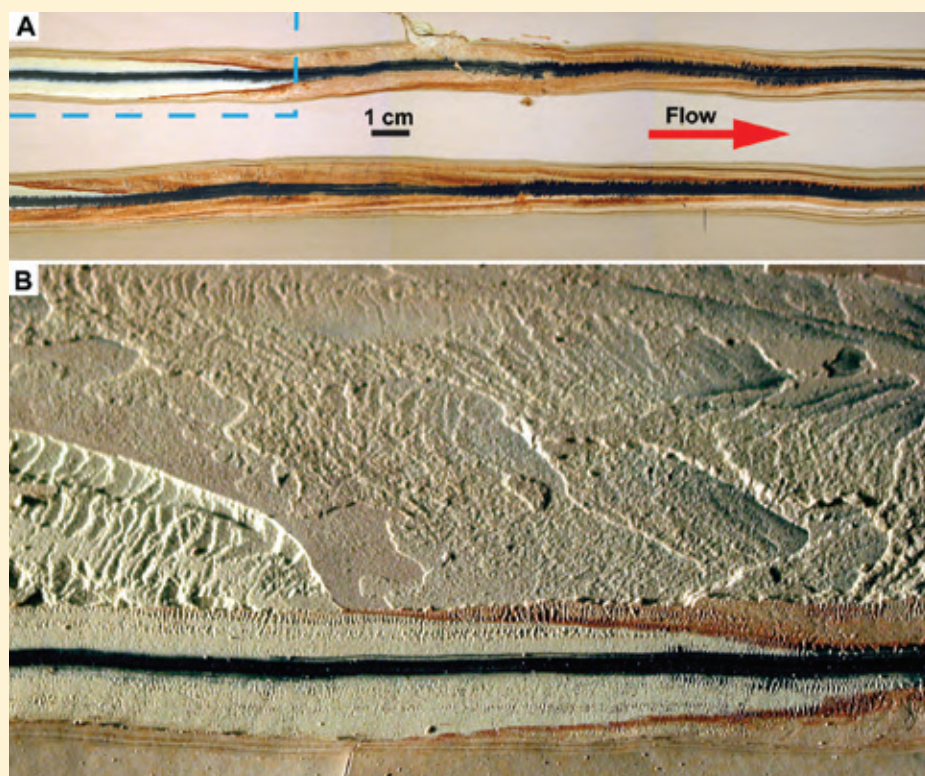


Figure 3. (A) Lateral accretion visualized by injection of pigments into flow. The clay bed was scraped parallel to flow in order to expose internal layering. Pigment markers outline clinoforms inclined to the right. Area marked with blue dashed line indicates the location of image (B). (B) Obliquely illuminated view of a portion of the mud bed (marked by blue dashed line in A), showing what the area just above the upper scrape looks like once the top portion of the bed has been peeled off. Peeling exposes two sets of internal cross-laminae, a lower one consisting of white clays, and an upper one that starts at the pigment marker and has a reddish hue. This type of structure is identical to "rib and furrow" structure as described from ripple cross-laminated sandy deposits.

More recent studies of modern shelf-mud deposits suggest that wave-supported mud suspension, in combination with tidal currents and/or fluvial discharge, may lead to cross-shelf transport in the form of fluid mud beds (e.g. Harris et al., 2005; Palinkas et al., 2006; Martin et al., 2008). Although in these studies it is presumed that mud transport is accomplished when fluid mud layers follow gravity, X-radiographs of the sediments in question tend to show interlaminated sand/silt/mud in the basal portion of the resulting beds. Most interestingly, in a number of published examples these laminae downlap onto the basal surface (Fig. 4). In the context of our experiments this could be interpreted as resulting from bedload transport and deposition of a mixture of sand, silt, and clay. This opens up the interesting possibility that purported fluid mud deposits (e.g. Wright and Friedrichs, 2006) actually consist of a lower cross-laminated portion ("invisible" if there is no sand or silt) that accumulated like the muds in our flume experiments, and have an upper,

massive appearing portion that settled subsequently from a dense muddy suspension. Flume experiments set up to test this scenario are feasible and should prove informative.

Close examination of the Eau Claire Formation shale beds (Fig. 5) also suggests that its shelf muds most likely did not accumulate via simple suspension settling. The laminated mudstone intervals (ML), characterized by thin silty laminae in a mudstone matrix (Figs. 5, 6, 7), show exactly the kinds of features that our flume experiments predict for muds emplaced by bedload transport. For example, in Figure 6, we see that the uppermost ML interval has inclined internal laminae that suggest lateral accretion of sediment due to bedload transport. Thus, this mud layer appears to have been deposited by currents rather than settling from suspension. Figure 7 shows multiple layers of this type and their variability. Some layers show clearly inclined silty laminae, updip truncations (couplet 3) and basal downlap (couplet 4), whereas others show indistinctly inclined or parallel laminae. Although individual layers differ from each other, their overall appearance strongly suggests a common origin. The difference in the inclination of laminae most likely reflects variations in flow direction, not a difference in depositional process. We know this quite well from field work with sandstones, where cross-bedding is clearly displayed in exposures parallel to flow, and barely visible in exposures perpendicular to flow.

Another factor that may affect "visibility" of inclined mud laminae may be the availability of contrast-producing grains. In our flume experiments, where pure clay was used, cross-lamination was only visible because we used pigment injections to mark contemporaneous surfaces. Without this the resulting clay beds would have a uniform

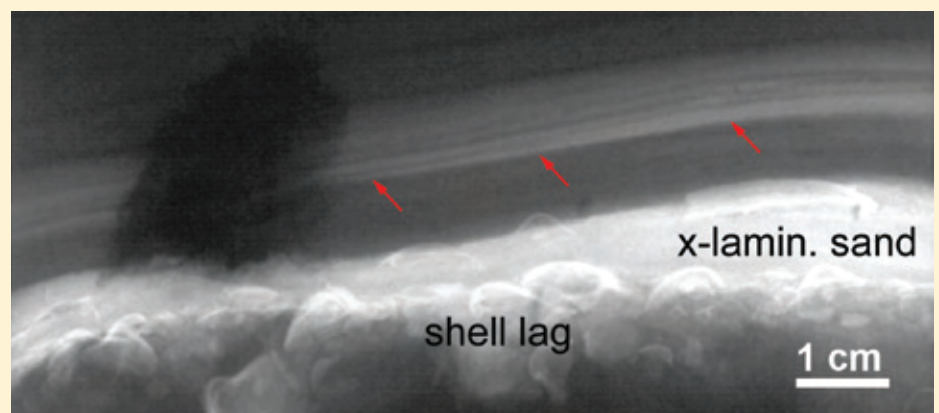


Figure 4. X-radiograph negative of modern shelf muds from the Gulf of Papua (Martin et al., 2008). Image shows a bundle of silty laminae in the base of a presumed fluid mud deposit (red arrows at base) that are inclined at a low angle to the left, suggesting current transport, possibly in the form of floccule ripples. The deposit is very similar to examples from the Cambrian Eau Claire Formation (Figs. 5, 6).

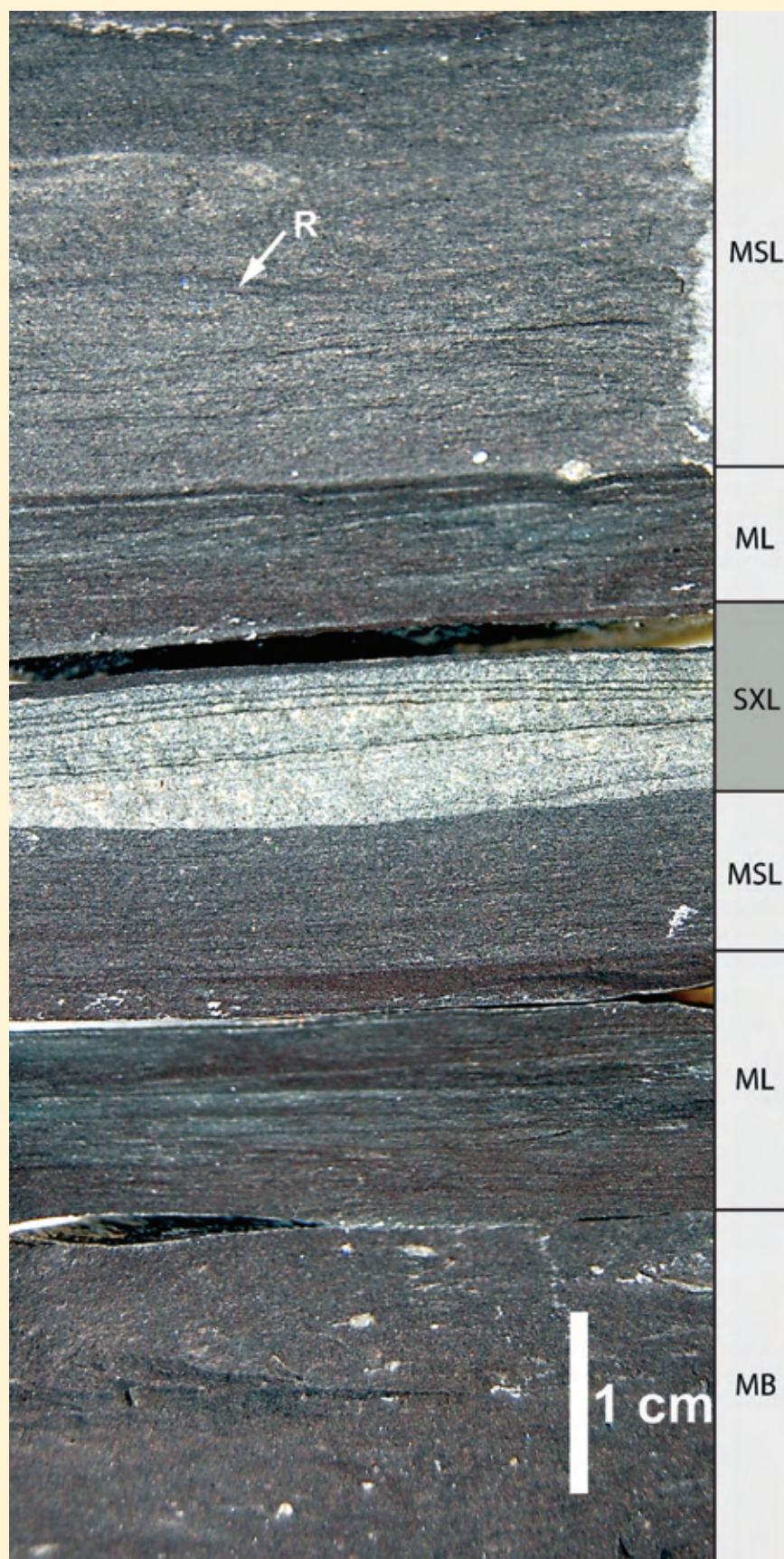


Figure 5. Section of Eau Claire drill core with various lithologies: MB = mudstone bioturbated; ML = mudstone laminated; MSL = mudstone silty laminated; SXL = sandstone cross-laminated (has a thin clay drape along which the core fractured). MSL has low angle inclined laminae and ripples (R). A detail image of the upper ML interval is shown in Fig. 6.

appearance, not unlike couplet 6 and the upper portion of couplets 4 and 5 shown in Figure 7. These observations from the Eau Claire Formation suggest that a substantial proportion of the shelf muds in that particular succession did not simply accumulate from material that settled out of suspension after storms stirred up the seabed. Instead, the available sedimentary features suggest distinct depositional events that were accompanied by initial erosion. In the context of our flume experiments, erosion seems to have been followed by transport of flocculated mud in bedload. In view of an overall storm-dominated Eau Claire shelf, these mud beds (Fig. 7) are probably best interpreted as deposited from offshore flowing gradient currents (Aigner and Reineck, 1982). These bottom currents were most likely turbid and transported flocculated mud as bedload. Given the presence of HCS beds within this succession, the cross-laminated mudstones may represent storms of lesser magnitude that were not capable of transporting large quantities of sand, or alternatively may be the distal tails of storm-induced currents that originated at a greater distance. The abundance of these muddy event beds in the Eau Claire suggests that, contrary to conventional wisdom, a substantial portion of its mudstones was deposited by currents.

CONCLUSIONS

Flume experiments are providing new insights that are transforming mudstone sedimentology. Already, basic experiments on mud deposition demonstrate that muds can deposit under energetic conditions. The associated sedimentary structures, albeit subtle and easily missed, are preserved and allow detection of current deposited muds in the rock record. With continued experimental work we will be able to connect an increasing number of sedimentary features in mudstones to definable physical processes, allowing us greatly improved interpretations of their depositional setting.

Observations made on ancient mudstones over the past decades likewise suggest that the deposition of mud is much more dynamic and complex than commonly appreciated (e.g. Potter et al., 2005). It is likely therefore, that in the light of new insights from experiments, new opportunities will arise to derive much better information about the geologic past from ancient mudstone successions.

ACKNOWLEDGEMENTS

The flume research that is presented here is supported by NSF grant EAR-0617128. We also would like to thank John Rupp at the Indiana Geological Survey (IGS) to facilitate access to Eau Claire cores in the IGS core library.

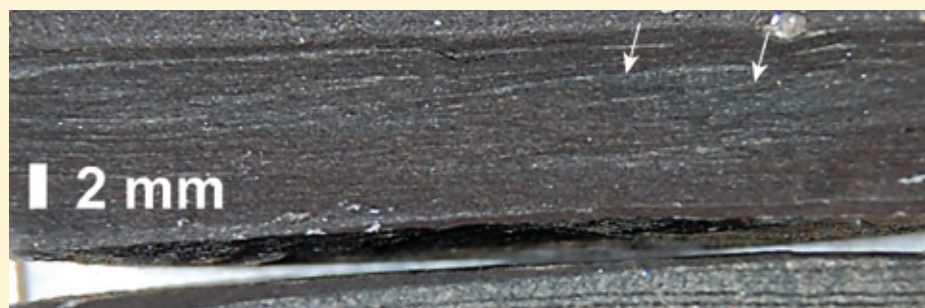


Figure 6. Close-up of the uppermost ML interval from Fig. 5, showing low angle inclined silty laminae (arrows) within a mudstone matrix. These silt-rich laminae act as surface markers in the same way as the pigment markers in our experiments (Fig. 3), and reveal lateral sediment accretion and bedload transport.

REFERENCES

- AIGNER, T. AND REINECK, H. E., 1982, Proximity trends in modern storm sands from the Helgoland Bight (North Sea) and their implications for basin analysis. *Senckenbergiana maritima*, v. 14, p. 183-215.
- GADOW, S. AND REINECK, H.E., 1969, Ablandiger Sandtransport bei Sturmfluten. *Senckenbergiana maritima*, v. 1, p. 63-78.
- HARRIS, C.K., TRAYKOVSKY, P.A., AND ROCKWELL-GEYER, W., 2005, Flood dispersal and deposition by near-bed gravitational sediment flows and oceanographic transport: A numerical modeling study of the Eel River shelf, northern California. *J. Geophys. Res.*, v. 110, p. 1-16.
- MARTIN, D.P., NITTROUER, C.A., OGSTON, A.S., AND CROCKETT, J.S., 2008, Tidal and seasonal dynamics of a muddy inner shelf environment, Gulf of Papua. *J. Geophys. Res.*, v. 113, p. 1-18.
- OSTROM, M.E., 1970, Field trip guidebook for Cambrian-Ordovician geology of western Wisconsin: Wisconsin Geological and Natural History Survey Information Circular 11, p.131
- JOHNSON, H.D. AND BALDWIN, C.T., 1996, Shallow Clastic Seas. In: *Sedimentary Environments: Processes, Facies and Stratigraphy*, 3rd Edition, H.G. Reading (ed.), Blackwell, p. 232-280.
- PALINKAS, C.M., NITTROUER, C.A., AND WALSH, J.P., 2006, Inner-Shelf Sedimentation in the Gulf of Papua, New Guinea: A Mud-Rich Shallow Shelf Setting. *J. Coastal Res.*, v. 22, p. 760-772.
- POTTER, P.E., MAYNARD, J.B., AND DEPETRIS, P.J., 2005, *Mud and Mudstones*. Springer Verlag, Berlin, 297p.
- REINECK, H.E., 1974, Vergleich dünner Sandlagen verschiedener Ablagerungsbereiche. *Geologische Rundschau*, v. 63, p. 1087-1101.
- REINECK H.E. AND SINGH, I.B., 1972, Genesis of laminated sand and graded rhythmites in storm-sand layers of shelf mud. *Sedimentology*, v. 18, p. 123-128.
- REINECK, H.-E., GUTTMANN, W.F., AND HERTWECK, G., 1967, Das Schlickgebiet südlich Helgoland als Beispiel rezenter Schelfablagerungen: *Senckenbergiana Lethaea*, v. 48 (3/4), p. 219-357.
- RINE, J.M., AND GINSBURG, R.N., 1985, Depositional facies of a mud shoreface in Suriname, South America: a mud analogue to sandy, shallow-marine deposits: *Journal of Sedimentary Research*, v. 55, p. 633-652.
- SCHIEBER, J., 1998, Sedimentary features indicating erosion, condensation, and hiatuses in the Chattanooga Shale of Central Tennessee: relevance for sedimentary and stratigraphic evolution. In: J. Schieber, W. Zimmerle, and P. Sethi (eds.), *Shales and Mudstones (vol. 1): Basin Studies, Sedimentology and Paleontology*, Schweizerbart'sche Verlagsbuchhandlung, Stuttgart, p. 187-215.
- SCHIEBER, J., AND SOUTHARD, J.B., 2009, Bedload Transport of Mud by Floccule Ripples - Direct Observation of Ripple Migration Processes and their Implications. *Geology*, in Press.
- SCHIEBER, J., SOUTHARD, J.B., AND THAISEN, K.G., 2007, Accretion of mudstone beds from migrating floccule ripples. *Science*, v. 318, December 14, 2007, p. 1760-1763.
- WALKER, R. G., AND HARMS, J. C., 1971, The "Catskill Delta": A prograding muddy shoreline in central Pennsylvania: *Jour. Geology*, v. 79, p. 381-399.
- WASINEE, A., SIMO, J.A., AND LEPAIN, D.L., 2008, Deposition of the Cambrian Eau Claire Formation, Wisconsin, Hydrostratigraphic implications of fine-grained cratonic sandstones. *Geoscience Wisconsin*, v. 19/1, p. 1-21.
- WRIGHT, L.D., AND FRIEDRICHS, C.T., 2006, Gravity-driven sediment transport on continental shelves: A status report. *Continental Shelf Research*, v. 26, p. 2092-2107.

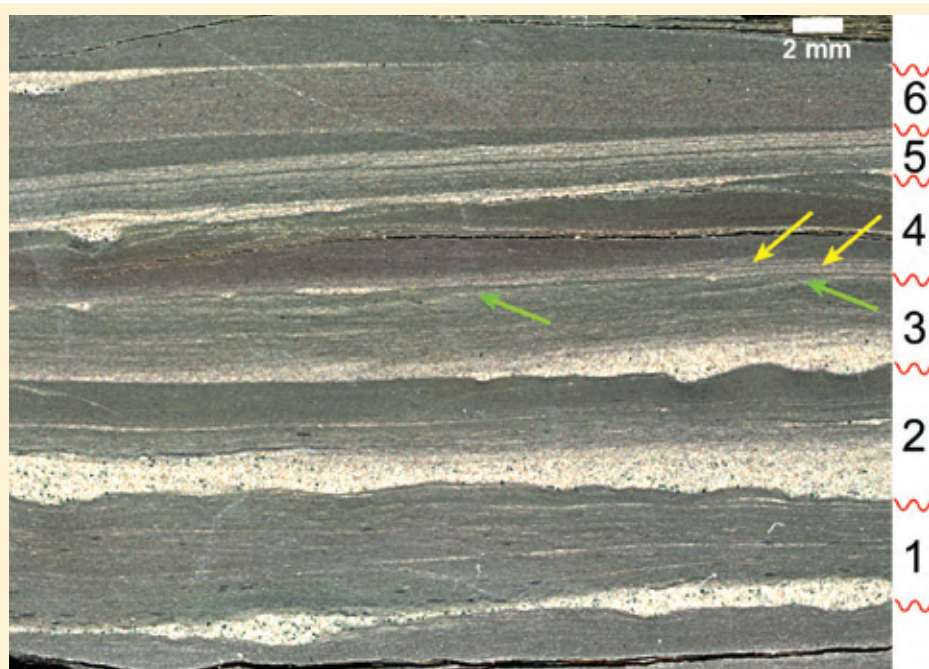
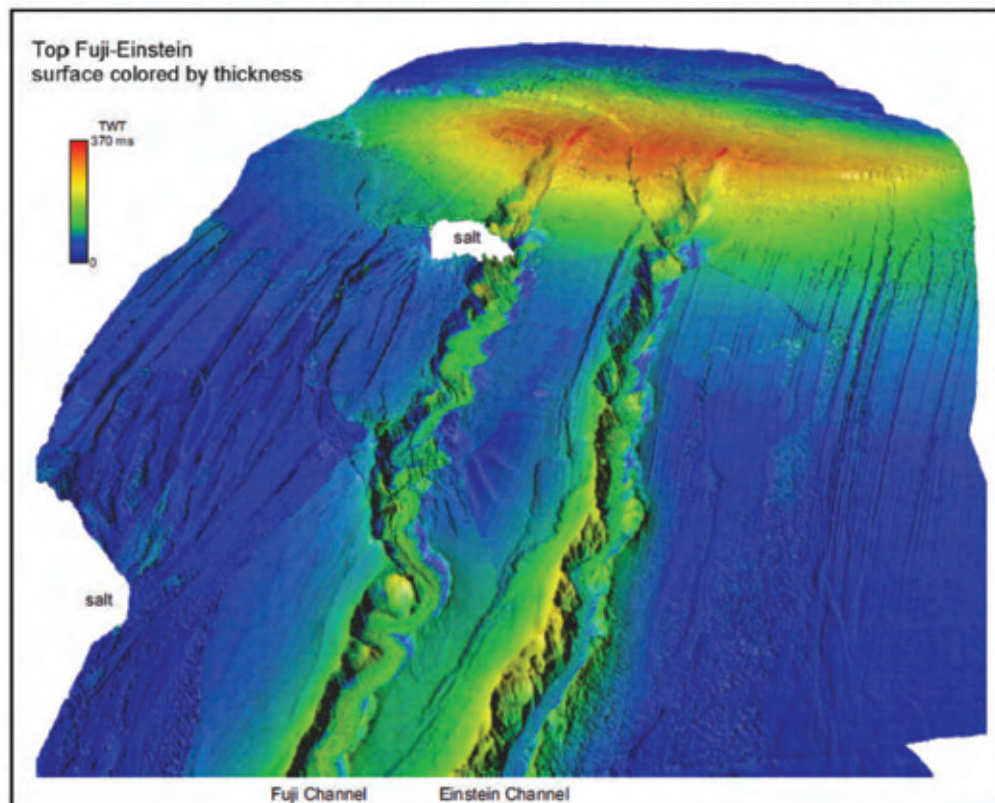


Figure 7. A succession of graded silt/mud couplets in the Eau Claire Formation. They are numbered successively and are separated by erosion surfaces. Couplet 3 shows the same inclined silty laminae (green arrows) as shown in Fig. 6, and couplet 4 shows downlapping silty laminae (yellow arrows) in its base. Couplet 5 shows silty laminae that are essentially horizontal, and couplets 1 and 2 show silty laminae that are very gently inclined. Couplet 6 has a mere hint of silt in the base, but is nonetheless most likely erosive.

Accepted April 2009

SEPM Research Conference
Application of Seismic Geomorphology Principles to
Continental Slope and Base-of-slope Systems:
Case Studies from Seafloor and Sub-Seafloor Analogues
 November 12-14, 2009 ----- Houston, Texas

Seismic geomorphology is the application of analytical techniques traditionally used in the study of landforms to the analysis of ancient, buried geomorphological surfaces as imaged by 3D seismic data. This Conference investigates deepwater examples to better understand deep marine depositional processes needed for reservoir prediction. It is a must attend for anyone working in this exploration arena or researching in these techniques.



Hilton
Houston Westchase
 9999 Westheimer Road
 Houston, Texas 77042-3802

Planning Committee

- | | |
|---|--|
| <ul style="list-style-type: none"> • Brad Prather:
Shell International E&P, Houston Texas
bradford.prather@shell.com • Mark Deptuck:
Offshore Petroleum Board, Halifax, Canada
mdeptuck@cnsopb.ns.ca • David Mohrig:
Jackson School of Geosciences, UT-Austin
mohrig@mail.utexas.edu | <ul style="list-style-type: none"> • Bruno Savoye:
Ifremer, Plouzané, France
bsavoye@ifremer.fr • Berend van Hoorn:
Independent Consultant, Darnius, Spain
bvanhoorn@aol.com • Russell Wynn:
National Oceanography Centre, Southampton, UK
rbw1@noc.soton.ac.uk |
|---|--|

Technical Program and more information at www.sepm.org
 Registration opens this summer

SEPM - Going Forward

During the last year I have discussed in this column, several aspects of SEPM and its membership. Topics included 1) the impact of migration of senior scientific and educational experts from universities and government institutions to the resource industry, 2) the high quality, applicability and value of SEPM publications, and 3) membership demographics as they could affect the future of SEPM. In this, my last Editorial, I wish to bring you briefly up to date on a recent SEPM meeting.

In February 19-21 of this year, SEPM Council, staff and a cross section of SEPM membership met for a Strategic Planning Meeting at Tioga, Texas. Six major issues were discussed and recommendations for action in the future were made. The issues were:

1. SEPM Financial Status
2. Membership Health
3. Governance of SEPM
4. Communicating the Science
5. Marketing SEPM
6. Partnering with other Societies

SEPM Financial Status. In the short term (~2 years) SEPM is in good financial shape, with sufficient operating cash, even with reduced revenues from book sales, conference attendance and a potential drop in membership. For the long term, SEPM revenues are largely tied to JSR continuing to generate a profit, which subsidizes other program areas. PALAIOS needs to continue its recent streak of small profits, while short courses, field trips and research conferences need to strive towards break even or profitable status.

There was considerable discussion about book publications that in the past were a significant revenue generator, but now consistently lose money. Several initiatives are underway to resolve the book-publishing issue, including an ad hoc committee, chaired by John Snedden, Secretary-Treasurer, to evaluate the entire book publishing business process.

Another point of discussion on the financial theme was that SEPM is heavily involved in the AAPG ACE and at a lesser level in the GSA Annual Meeting. We are also looking at expanding our footprint at many other meeting venues, especially on a global scale. Since the society does not have its own large revenue generating meeting, we need to look at how to these meetings have a more direct positive financial impact.

Membership Health. Long term declining membership is typical of most geological societies, including SEPM. This is generally related to changing population demographics and now the economy. The general recommendations from the Tioga meeting revolved around increasing appeal to students and young professionals as well as a higher global profile.

Governance of SEPM. This theme was again related to SEPM demographics with the focus on how to get younger members more involved in all aspects of the society.

Communicating the Science. Being on the inevitable countdown to all digital publications and no paper, how will this impact future revenues, demand for the journals and ability to maintain high quality? How do we improve the visibility and functionality of SEPM website? How do we keep "print" available to those that love it?

Marketing SEPM. A greater presence by SEPM at national, international and sectional meetings is required. There is also a need for outreach to the public sector and perhaps for lobbying for federal funding. SEPM will strike a committee to establish the viability of an SEPM Distinguished Lecture Tour.

Partnering with other Societies. SEPM currently partners with AAPG, GSA, and GSL. How can these partnerships be strengthened and new partnerships be established.

In summary, SEPM is strong, vibrant and well respected. It has a solid, though declining membership. We have a dedicated staff in Tulsa and a responsible executive with excellent committee support. The Strategic Planning session in Tioga was to ensure that the Society is aware of and receptive to present and future needs of its Membership.

Overall, it's been an interesting and rewarding experience to be the President of the society and I encourage all members to consider becoming a part of the governance, especially those that have not participated in the past.

If you have any comments or input on these or other SEPM strategic issues please contact Howard Harper (hharper@sepm.org). The Summary Report for the Tioga meeting will be posted on the website shortly.

*Dale Leckie, President
SEPM Society for Sedimentary
Geology*



The
Geological
Society

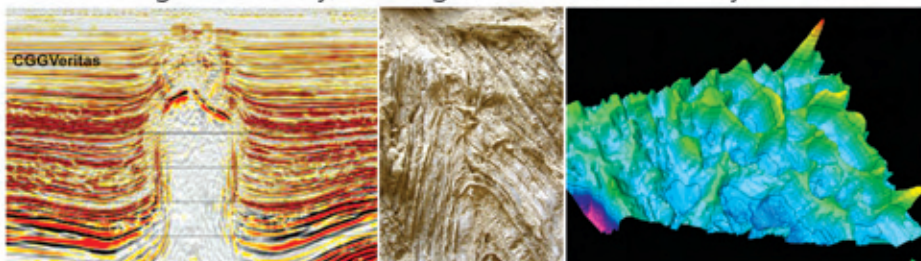


International Conference: Call for Abstracts

Salt tectonics, sediments and prospectivity

20 - 21 January 2010

The Geological Society, Burlington House, Piccadilly, London



CALL FOR ABSTRACTS - to be submitted by 31st July 2009

This international conference aims to bring together academic and industrial geoscientists to review recent advances in our understanding of halokinetic processes and to explore the links between salt tectonics and sediments.

KEYNOTE SPEAKERS:

Ian Davison (GEO International Ltd)

Kate Giles (New Mexico State University, USA)

Mike Hudec (Bureau of Economic Geology, University of Texas, USA)

Hemin Koyi (Uppsala University, Sweden)

Ben Kneller (University of Aberdeen, UK)

Webster Mohriak (Petrobras)

Prad Prather (Shell)

Mark Rowan (Rowan Consulting, Colorado, USA)

Simon Stewart (Heriot-Watt University, UK)

Bruce Trudgill (Colorado School of Mines, USA)

Bruno Vendeville (University of Lille, France)

Papers are welcomed from a wide range of sub-disciplines including, earth surface processes and landforms, outcrop or mining data, subsurface seismic, well and core data, potential fields and physical and numerical modeling.

Abstracts or sponsorship enquiries should be sent to s.archer@abdn.ac.uk

Please see the following website for abstract information www.abdn.ac.uk/geology/events/saltsediment/

For further information about this conference, please contact:

Steve Whalley, Event Co-ordinator: +44 (0)20 7432 0980

or email: steve.whalley@geolsoc.org.uk

Convenors:

Stuart Archer
(University of Aberdeen)

Ian Alsop
(University of Aberdeen)

Adrian Hartley
(University of Aberdeen)

Neil Grant
(ConocoPhillips)

Richard Hodgkinson
(Bowleven)



At the forefront of petroleum geoscience

www.geolsoc.org.uk/petroleum

SEPM Activities at the Denver Annual Meeting

(All meetings listed will be at the Denver Marriott City Center
unless otherwise noted.)

Sunday, June 7

SEPM Council Meeting	8:00 - 5:00	Colorado A
SEPM NAMS Board Meeting	3:00 - 5:00	Saratoga A
Exhibit Icebreaker	5:00 - 7:30	Convention Center
Student Forum	8:00 - 10:00	Denver E

Monday, June 8

SEPM Exhibit, Booth #351	8:30 - 5:30	Convention Center
SEPM Ad Hoc Book Committee	11:00 - 1:00	Saratoga A
AAPG/SEPM Student Reception	6:00 - 9:00	Hyatt Regency
SEPM Research Groups	7:00 - 10:00	Denver Ballroom
Carbonate Research		
Clastic Diagenesis		
Deep Water Turbidites		
Sequence Stratigraphy		
Source-to-Sink		

Tuesday, June 9

SEPM Exhibit, Booth #351	8:30 - 5:30	Convention Center
SEPM Business Luncheon	11:30 - 1:30	Colorado E
SEPM Foundation Reception	6:00 - 7:00	Denver/Colorado
SEPM President's Reception	7:00 - 9:30	Colorado E

Wednesday, June 10

SEPM Exhibit, Booth #351	8:30 - 12:00	Convention Center
--------------------------	--------------	-------------------

A Special Thanks to the Denver SEPM Annual Meeting Organizing Committee

David Budd, SEPM Vice Chair
Rick Sarg, SEPM Oral Sessions Chair
Dave Eby, SEPM Poster Sessions Chair
Gus Gustason, SEPM Field Trip and Short Course Chair
Tim Farnham and Stephanie Gaswirth, SEPM Awards Co-Chair

Thanks to all the SEPM Annual Meeting Sponsors

BP • Chevron • EBY Petrography & Consulting • Enerplus Resources USA
ExxonMobil • Lario Oil & Gas Company • Nexen Inc • Shell E & P

