

The

# SEDIMENTARY

A publication of SEPM Society for Sedimentary Geology  
with the Sedimentary Geology Division of GSA

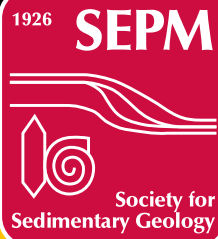
doi: 10.2110/sedred.2010.1  
Volume 8, No. 1, March 2010

# Record



**INSIDE:** ESTIMATING THE AGE OF NEAR-SHORE CARBONATE SLIDES USING CORAL REEFS AND EROSIONAL MARKERS: A CASE STUDY FROM CURACAO, NETHERLANDS ANTILLES

PLUS: PRESIDENT'S COMMENTS, EDITOR'S COMMENTS  
GEOLOGICAL SOCIETY OF AMERICA



# SEPM BOOKSTORE

## Special Publication #92

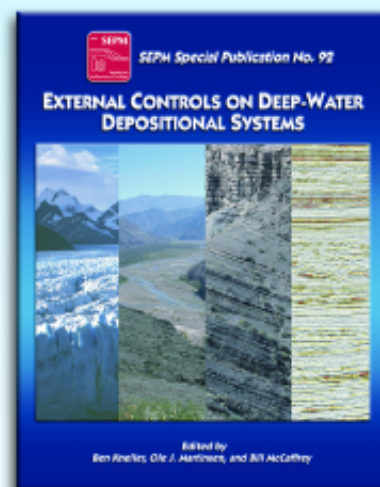
## External Controls on Deepwater Depositional Systems

*Edited by: Ben Kneller, Ole J. Martinsen and Bill McCaffrey*

The principal objective of the meeting from which this set of papers arose was to gain an overview of the current state of knowledge of the roles and interplays of external controls on deposition in deep marine environments. By external controls we mean allocyclic or allogenic factors, i.e., those that are unrelated to the self-organization of the depositional system (autocyclic or autogenic); principal among these are climate, sea level, sediment supply, and tectonics. One of the big questions that the meeting sought to address concerned the comparability of the recent high-frequency, high-resolution record with the older, generally lower-frequency stratigraphic record of "deep time"; to what extent are the apparent differences a function of resolution, or of comparisons between a glacial and a nonglacial Earth? In fact, as the papers in this volume illustrate, the variability between individual systems, even in Late Glacial time, and the paucity of constraints on older systems makes these questions difficult to answer, but some useful conclusions can be drawn.

The papers presented at the meeting were organized into themes that included: overviews of glacial sea-level change, and of climate modeling; external controls on large river-fed submarine fans, including the effects of climate and sea level on the fluvial system itself; influences of climate, sea level, and tectonics on a range of smaller modern systems; deep marine processes; the outcrop record of the pre-Pleistocene Earth; the subsurface record of the pre-Pleistocene Earth; and syntheses. The organization of the volume largely reflects this structure.

**Catalog #40092 • SEPM Member Price: \$100.00**



**Now available in CD ROM  
SEPM Special Publications  
#1 - #85, Short Course  
Notes, Core Workshops  
and Field Trip Guidebooks**

**SEPM Member Price: \$20 per CD**  
**Order from the SEPM Bookstore.**

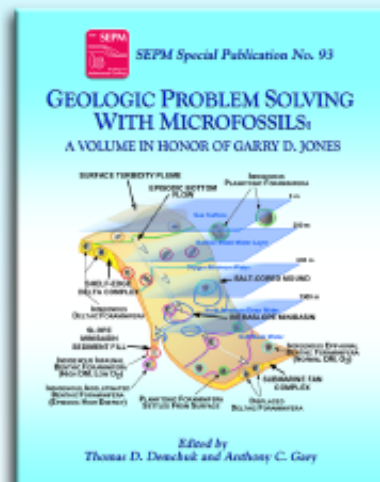
## Special Publication #93

## Geologic Problem Solving with Microfossils: A Volume in Honor of Garry D. Jones

*Edited by: Thomas D. Demchuk and Anthony C. Gary*

The papers presented in this SEPM Special Publication are the result of the successful SEPM Research Conference of the same name held on the campus of Rice University in Houston, Texas, during the days of March 6-11, 2005. Dr. Garry D. Jones originated the idea of a problem focused microfossil conference and he was the primary driving force during the conferences early planning until his untimely passing in May of 2004. At that time a group of Garry's colleagues carried forward his wishes for the conference through to its successful completion. More than 150 participants from 20 countries registered for the conference, and over 90 oral and poster sessions were given during the three formal days of the conference. In addition, 22 corporate and institutional sponsors donated to ensure the success of this event. After expenses, the remaining funds were passed on to SEPM, which placed the funds in the Garry Jones Memorial Grant for student research. The fund was established in Garry's memory to honor his contributions to micropaleontology. Grants are awarded from the fund to students conducting research with a substantial micropaleontological component and it is administered by the North American Micropaleontology Section (NAMS) of SEPM.

**Catalog #40093 • SEPM Member Price: \$105.00**







*Cover photo: Western Caracus Bay Slide Headwall (view to the south). Approximately twenty meters of the fifty meter headwall is exposed above sea level.*

SEPM Council, Staff and Members all give thanks to David Furbish, Steven Goodbred and Molly Miller (Vanderbilt University, Department of Earth and Environmental Sciences) for the excellent stewardship of *The Sedimentary Record* during their term as Co-Editors.

## Editors

**Ruarri Day-Stirrat**

ruarri.day-stirrat@beg.utexas.edu

Bureau of Economic Geology, University of Texas – Austin

**Xavier Janson**

xavier.janson@beg.utexas.edu

Bureau of Economic Geology, University of Texas – Austin

**Wayne Wright**

wayne.wright@beg.utexas.edu

Bureau of Economic Geology, University of Texas – Austin

## SEPM Staff

4111 S. Darlington, Suite 100, Tulsa, OK 74135-6373

Phone (North America): 800-865-9765

Phone (International): 918-610-3361

**Dr. Howard Harper, Executive Director**

hharper@sepm.org

**Theresa Scott, Associate Director & Business Manager**

tscott@sepm.org

**Michele Tomlinson, Publication & Technology Coordinator**

mtomlinson@sepm.org

**Janice Curtis, Membership Associate**

jcurtis@sepm.org

**Edythe Ellis, Administrative Assistant**

eellis@sepm.org

## SEPM Council

**Steve Driese, President**

Steven\_Driese@baylor.edu

**Paul M. (Mitch) Harris, President-Elect**

MitchHarris@Chevron.com

**John Snedden, Secretary-Treasurer**

john.w.snedden@exxonmobil.com

**André Strasser, International Councilor**

andreas.strasser@unifr.ch

**Nancy Engelhardt-Moore, Councilor for Paleontology**

nengelhardt-moore@comcast.net

**Evan Franseen, Councilor for Sedimentology**

evanf@kgs.ku.edu

**John Holbrook, Councilor for Research Activities**

holbrook@uta.edu

**Paul McCarthy, Co-Editor, JSR**

mccarthy@gi.alaska.edu

**Gene Rankey, Co-Editor, JSR**

grankey@ku.edu

**Stephen Hasiotis, Co-Editor, PALAIOS**

hasiotis@ku.edu

**Edith Taylor, Co-Editor, PALAIOS**

etaylor@ku.edu

**Gary Nichols, Co-Editor, Special Publications**

g.nichols@gl.rhul.ac.uk

**Brian Ricketts, Co-Editor, Special Publications**

brian.ricketts@xtra.co.nz

**Tim Carr, President, SEPM Foundation**

tim.carr@mail.wvu.edu

# CONTENTS

- 4** Estimating the Age of Near-Shore Carbonate Slides Using Coral Reefs and Erosional Markers: A Case Study from Curacao, Netherlands Antilles
- 11** President's Comments  
*Changing Times, and Changing Formats for SEPM Publications*
- 13** Editor's Comments
- 14** Sedimentary Geology Division of the Geological Society of America

The Sedimentary Record (ISSN 1543-8740) is published quarterly by the Society for Sedimentary Geology with offices at 4111 S. Darlington, Suite 100, Tulsa, OK 74135-6373, USA.

Copyright 2010, Society for Sedimentary Geology. All rights reserved. Opinions presented in this publication do not reflect official positions of the Society.

The Sedimentary Record is provided as part of membership dues to the Society for Sedimentary Geology.

[www.sepm.org](http://www.sepm.org)

# Estimating the Age of Near-Shore Carbonate Slides Using Coral Reefs and Erosional Markers: A Case Study from Curacao, Netherlands Antilles

Matthew J. Hornbach\*, Paul Mann, Fredrick W. Taylor, Sabine W. Bowen

The University of Texas at Austin, Jackson School of Geosciences

Institute for Geophysics, J.J. Pickle Research Campus, Bldg. 196

10100 Burnet Rd., Austin TX 78758-4445

doi:10.2110/sedred.2010.1.4

\*Corresponding Author, email: matth@ig.utexas.edu, Phone: (512) 636-5030

## ABSTRACT

Carbonate mass failures are widespread, particularly along steep tropical shorelines, however, the age, frequency, and cause of these failures are often poorly constrained. As shorelines undergo intensive human development, understanding when carbonate slopes failure occur is becoming increasingly important. Using both land and marine-based observations, we present methods for making valuable first-order age estimates of near-shore slope failures. As a case study, we analyze the partially submerged lower carbonate terrace along the southern shoreline of Curacao, Netherlands Antilles. This terrace sits adjacent to a well-documented carbonate slope failure. Our combined land-sea study constrains the slide contact, the amount of post-slide coral reef growth, and the location of erosional shoreline notches. From these observations, we place limits on the timing of slope failure, and conclude that the Caracas Bay slide did not occur recently (within the last ~3000 years) but more likely at least ~16,000 years ago, near the end of the last interglacial sea level high stand. Slope failure likely occurred along the unconformable contact separating the base of the coastal limestone with underlying Cretaceous basalt, and may have been triggered by a large earthquake along the Caribbean-South American plate boundary.

**Key Words:** slide age; slope failure; Carbonate; Curacao

## INTRODUCTION

Evidence for massive (>1 km<sup>2</sup>) carbonate slope failures exists along many islands in the Pacific, Mediterranean, and Caribbean particularly in seismically active areas (e.g., Ota et al., 1997; ten Brink et al., 2006; Pedley et al., 1993). The age, frequency, and triggering mechanisms associated with these failure events remain poorly constrained, making it difficult to determine both the cause and the probability of future failure at these sites. Both recent and historic accounts of slope failures along steep coasts suggest they are generally triggered by earthquakes, although torrential rain and volcanism are also causes (e.g., Keefer, 1984; Densmore and Hovius, 2000; Ward and Day, 2003).

The combination of continued population growth and limited land area has led to more aggressive development and human occupation along elevated, potentially unstable shoreline carbonate marine terraces (e.g., Anderson et al., 2008). The foundations of these terraces often rest on steeply dipping heavily weathered former

crystalline rocks that have degraded into clays and shales (e.g., Vitali et al., 1999). Most volcanic clays and shales are low-permeability, have low coefficients of sliding friction, and represent likely failure surfaces for overlying carbonate rocks (e.g., Frydman et al., 2007; Callot et al., 2008; Balance, 1991; Byerlee, 1978). Understanding when, why, and how shoreline carbonate slides occur constrains the overall stability of a site, their potential for generating tsunamis, and ultimately whether they are suitable for human occupation (e.g., Anderson et al., 2009; Ward, 2001).

This paper represents a first approach at using geologic observations of late Quaternary shoreline features and newly acquired quasi-3D bathymetric chirp data near Caracas Bay, Curacao, to assess the age of a previously recognized mega-slide (De Buissonje and Zonnenfeld, 1976) (Fig. 1). Previous studies suggest the Caracas Bay slide may be only a few thousand years old with the implication that the adjacent carbonate terrace may be unstable and subject to future sliding (De Buissonje and Zonnenfeld, 1976). Integrating on-land data with the offshore bathymetry, we contend that the slide is a least 15 ka old, but likely much older (~116 ka). We also infer the location of the slide rupture surface and briefly discuss the possible mechanisms necessary to trigger failure. This analysis presents observation-based techniques for estimating the age of shoreline slides when no other age constraints are available.

## GEOLOGICAL SETTING OF CARACAS BAY

Curacao is the largest of the three Leeward "ABC Islands" (Aruba, Bonaire, Curacao) of the Netherlands Antilles, and is situated along the crest of the Leeward Antilles Ridge in the Caribbean Sea about 70 km north of Venezuela (Fig. 1). The Leeward Antilles ridge forms a major crustal ridge along the currently active Caribbean-South America plate boundary; its crustal structure is consistent with a Cretaceous island arc and oceanic plateau origin (e.g., Magnani et al., 2009). Strike-slip and convergent plate motions modified the Leeward Antilles ridge during the Cenozoic creating northwest-striking faults separating the islands and forming steep coastlines (Gorney et al., 2006; Hippolyte and Mann, in press). The succession comprises a thick (5 km) section of Cretaceous basalts (Gorney et al., 2006) that is overlain by younger Neogene and capped by Pleistocene terraces. Pleistocene carbonate terraces unconformably overlie Neogene carbonates; these Pleistocene terraces make up the bulk of the carbonate terrace exposed at the surface, with progressively younger terraces found seaward (e.g., Alexander, 1961; De Buissonje and Zonneveld, 1976; Fouke et al., 1996; Schellmann et al., 2004) (Fig 1).



**Figure 1. Geologic map of Caracas Bay and surrounding area showing the location of carbonate marine terraces. Note that Caracas Bay (as well as areas northeast) appear to have missing marine terraces compared to the southeast. Bathymetry is adapted from echosounder data originally collected by De Buissonje and Zonneveld (1976). These data show a clearly defined slide track. The extended slide run-out has a relatively constant width, suggesting a  $\sim 1 \text{ km}^2$  block translated as a single rigid mass along the slide track. The bottom inset shows the location of Curacao in relation to other islands and the Caribbean-South American plate boundary. The top inset shows the location of Caracas bay in relation to the island of Curacao.**

Curacao originally evolved from part of a volcanic arc formed when the South American plate subducted beneath the Caribbean during the Cretaceous (e.g. Magnani et al., 2009). Radiometric dating of carbonate marine terraces indicate that younger late Pleistocene ( $\sim 116 \text{ ka}$ ) terraces overly older Middle Neogene ( $\sim 12 \text{ ma}$ ) terraces (e.g., Alexander, 1961; Fouke et al., 1996; Schellmann et al., 2004). The youngest terraces uplifted at a moderately slow rate, averaging  $\sim 0.05 \text{ mm/yr}$ , with a maximum uplift of  $\sim 0.08 \text{ mm/yr}$  (Alexander, 1961; Fouke et al., 1996; Schellmann et al., 2004). Today, the island represents an archetypal example of an eroded

anticline, with the central region of the island exposing weathered basalt soil, and the island edges comprised of carbonate marine terraces overlying weathered basalt (Hippolyte and Mann, in press) (Fig. 1). The limestone cuestas ringing the island dip seaward and strike approximately parallel to shore.

We focus our slope stability study on Caracas Bay, Curacao, where a known carbonate terrace slope failure exists. Located at the southeast corner of the island, Caracas Bay formed when a wedge-shaped 50-350 m thick subaerially exposed seaward-dipping carbonate cuesta covering an area of  $\sim 1 \text{ km}^2$  broke free from its terrace and plunged into

the ocean, plowing a 1 km wide and 50 m deep channel into the seafloor as it slid along the steeply dipping ( $\sim 9^\circ$ ) submarine margin (De Buissonje, 1974; De Buissonje and Zonneveld, 1976) (Fig. 1). The slide, which likely occurred along the limestone-basalt contact, left house-size boulders strewn across the beach, displaced thousands of cubic meters of sediment from the seafloor and probably spawned a large tsunami. From the deeply-cut and well-defined slide track extending down slope, it appears as if this slide was a single catastrophic event (Fig. 1) (De Buissonje, 1974; De Buissonje and Zonneveld, 1976). A massive  $\sim 30 \text{ m}$  high near-vertical headwall from the slide exists along the western half of Caracas Bay (Fig. 2). Although previous studies suggest the Caracas Bay slide occurred within the last few thousand years and that indigenous people might have witnessed the event (De Buissonje and Zonneveld, 1976), the exact age of the slide remains unknown.

## CARACAS BAY LAND-BASED FIELD SURVEY

In August, 2007, we conducted both land and marine-based field work in and around Caracas Bay. For the land-based field work, we examined carbonate terraces and slide headwalls. We also mapped geologic contacts, determined strikes and dips of limestone units, noted erosional markers, and compared our observations to previous regional geologic interpretations.

The cliff on the western flank of Caracas Bay was interpreted as a massive slide headwall (DeBuissonje and Zonnenfeld, 1976). This feature consists of moderately-to-poorly bedded limestone units of Quaternary age (De Buissonje, 1974, De Buissonje and Zonnenfeld, 1976). The brittle nature of these units and the amount of talus at the base of the cliff indicate that mass wasting is an ongoing process along the cliff face. Strike and dip measurements of the marine terraces that make-up the cliff indicate the terrace surfaces, on average, dip  $\sim 10^\circ$  seaward to the southwest.

Cretaceous basalts underlie the limestone cliff, however, because of erosion and mining operations that have covered the north edge of the terrace with tailings, no sharp basalt-limestone contact was observed. Nonetheless, a clear transition from eroded limestone to basalt talus occurs near sea level on the northern edge of the headwall. From our outcrop maps and estimated contact points, we infer that the basalt-limestone contact dips  $\sim 8\text{--}10^\circ$  seaward, consistent with previous regional studies and with the offshore dip of the seafloor (De Buissonje and Zonnenfeld, 1976).





**Figure 2.** Photomosaic of the western headwall at Caracas Bay. The cliff face is approximately 0.75 km long and tens of meters high. Normal faults are located within the headwall.

Within the western headwall, several west-northwest striking normal faults exist with average apparent dips of  $\sim 30^\circ$  (Fig. 2). Previous studies speculated that these faults played an important role in slope stability at this location (De Buissonje and Zonnenfeld, 1976). Fault offsets are on the order of meters or less, indicating relatively minor slip has occurred. An unfaulted Quaternary-age carbonate reef unconformably overlies these faults (De Buissonje, 1974; DeBuissonje and Zonnenfeld, 1976) and no evidence for the fault exists along the hard carbonate terrace surface above the faults, indicating that they have been inactive since emplacement of the unconformity and that faulting must have occurred before this carbonate unit formed.

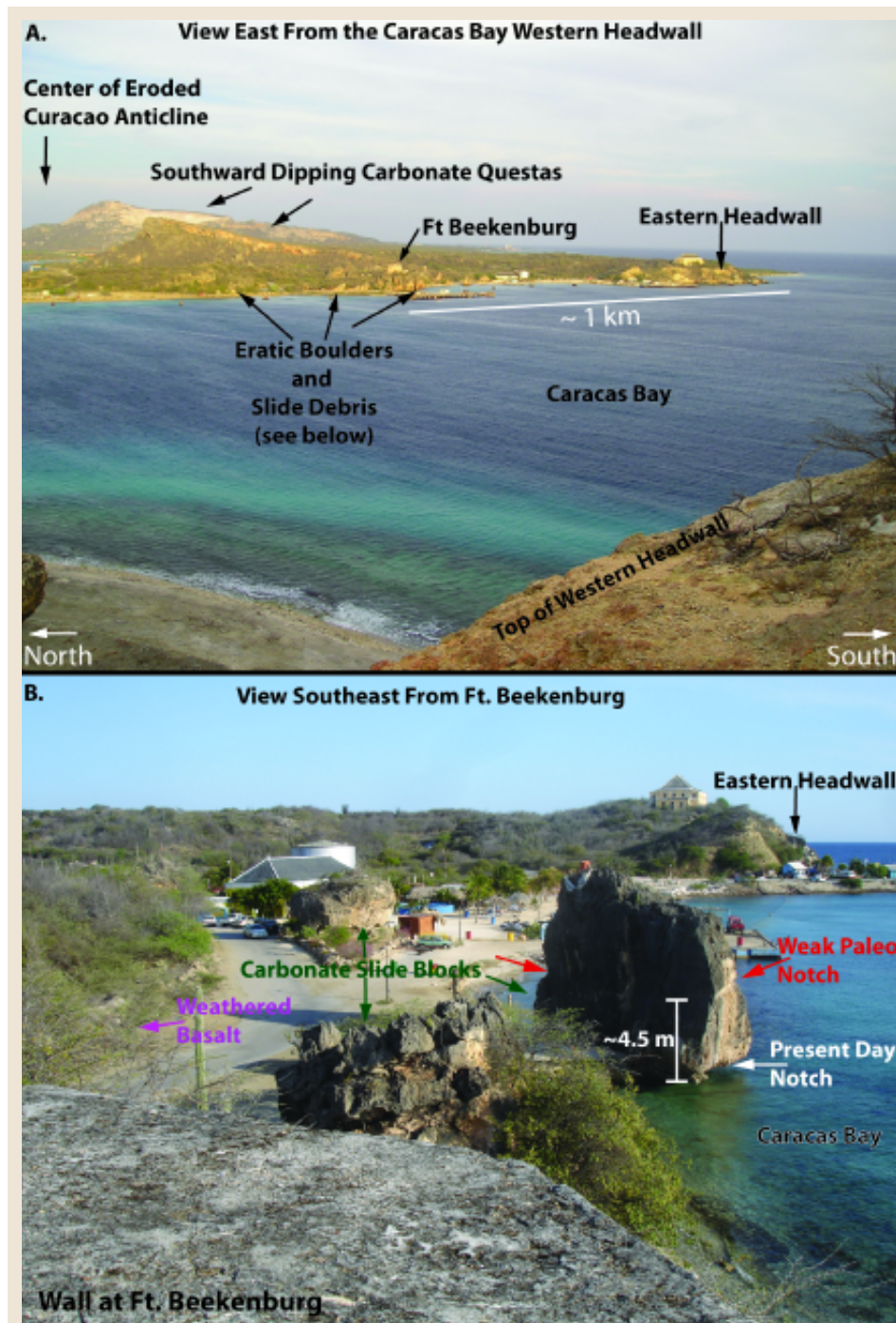
The structure along the northern and eastern shore of the bay sharply contrasts with the western headwall. Along the north edge of the bay, weathered basalt is anomalously exposed along the shoreline and large erratically dipping house-sized limestone boulders rest directly above weathered muddy basalt (Fig. 3A). Based on the measured dip at contacts between basalt and the scattered limestone blocks observed in the region, we estimate a seaward dip of the basalt of  $\sim 10$  degrees, similar to the current dip of most exposed limestone terraces in the region. A cluster of small, isolated limestone blocks near Fort Beekenburg exhibit highly variable dip directions (Fig. 3B). We interpret this as a large semi-coherent limestone block that has partially slid and broken apart along the basalt contact (Fig. 3). At the far eastern edge of the bay another smaller marine terrace headwall exists, indicating the eastern limit of the Caracas Bay slide (Fig. 3). The eastern headwall comprises the same units as the western headwall with similar strike and dip, also consistent with previous studies (DeBuissonje and Zonnenfeld, 1976). The field analysis indicates the slide complex spans 1.2 km across the bay, with headwalls on the west and extreme southeastern edge of the bay and the slide rupture surface outcropping at the basalt contact along the northern shore (Figs. 1, 3).

## CARACAS BAY MARINE SURVEY

In addition to our land-based field study, marine-based chirp sonar data were collected

across Caracas Bay in order to constrain slide and seafloor geometry. In total, we collected more than 50 km of high-resolution seismic

chirp sonar data in the bay using a portable Knudsen 320B echosounder. All data were processed and analyzed using Paradigm



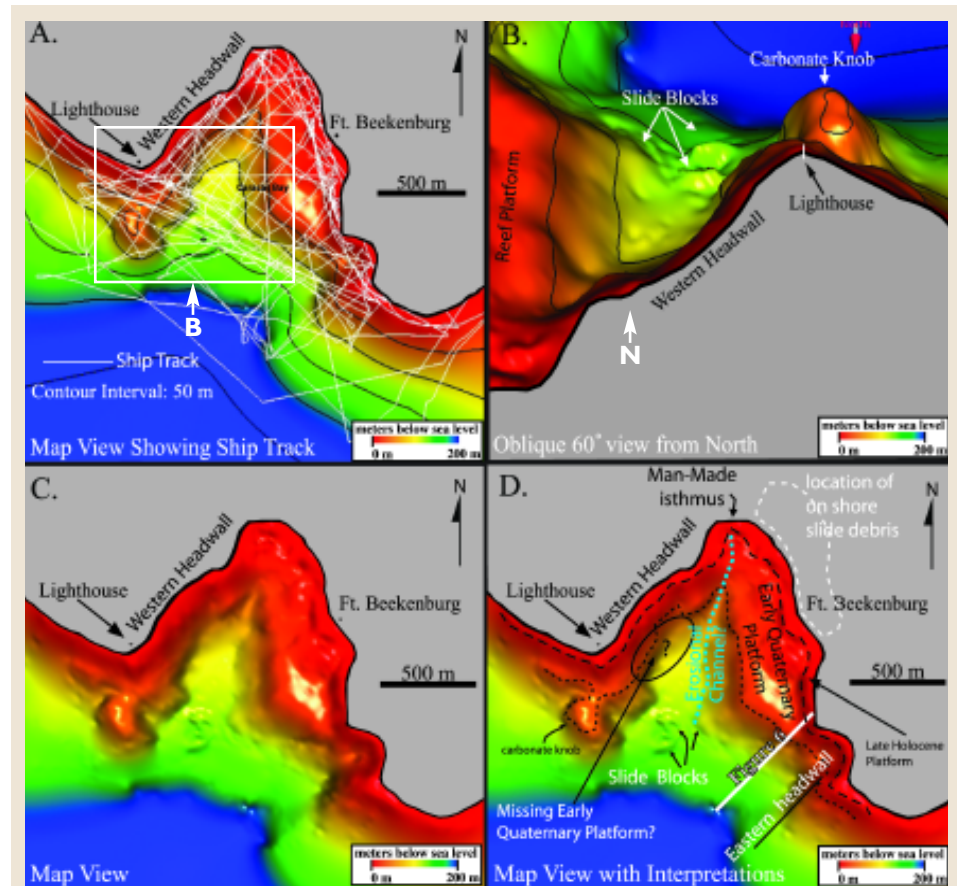
**Figure 3.** (A) is a photograph taken in the east-northeast direction atop of the western headwall. (B) is a photograph taken in a south-southeast direction from Ft. Beekenburg. A weak but clear erosional notch exists  $\sim 4.5$  m above sea level in the slide block right-center of the photograph.

Geophysical software Geodepth. We merged the data to create high-resolution quasi-3D images of the site that reveal valuable information regarding the shape, depth, and structure of the slide (Fig. 4).

Generating shaded 3D images that note dip angle changes, we identified several sharp angular seafloor features along the southwest portion of the bay (Fig. 4B). We interpret these jagged seafloor features as remnant slide blocks, since they appear similar in size and shape to the slide debris observed along the north shore (Fig. 4D). The largest and best defined slide blocks appear as anomalous sharp-edged seafloor bulges located just east of the western headwall. We estimate the largest “blocks” have heights of ~10–20 m and widths up to ~40 m, comparable to the largest slide debris found along the north shore of Caracas Bay.

Jagged slopes, steeply dipping contours and contacts, and slide debris exist along the extreme western and southeastern portion of land surrounding Caracas Bay. Nonetheless, the seafloor along the eastern half of the bay appears generally flat, and shows no significant evidence of slide debris in the region (Figs. 4, 5). This is particularly true in water depth of ~40 meters and is surprising since this flat region is adjacent to a coastal zone covered with house-sized boulders and slide debris with erratic dips (Fig. 4). Given (1) the uniformity and flatness of the eastern half of the Caracas Bay seafloor (Fig. 4), (2) the strong seafloor reflectivity in this region (Fig. 5); and (3) the lack of slide debris in the offshore area - despite being adjacent to significant subaerial carbonate slide debris - we interpret this region as a carbonate platform that formed post-failure. Two clearly identifiable carbonate platforms exist offshore: a pronounced platform at ~40 m below sea level extends more than 200 m from the shoreline, particularly along the eastern half of the bay; a less developed platform ~10 m below sea level extends ~50 m from shore, ringing the bay (Figs. 4, 5). A ~40 m deep subsurface knob also exists just southeast of the lighthouse, south of the western headwall (Fig. 4). From the shape and high-amplitude reflectivity of this knob, we interpret this as a pinnacle reef that likely formed since sliding occurred (Fig. 4).

Analysis of seafloor images also suggests a paleochannel once cut north-south through the deepest section of the Bay (Fig. 4). Because of human development around the north end of the bay, it remains difficult to link this channel to an obvious on-land drainage. Nonetheless, a gully currently empties into the northwest corner of Caracas Bay, and according to local residents, part of the narrow isthmus



**Figure 4.** (A) map-view of ship tracks of the collected chirp data. (B) oblique view of the seafloor along the western half of the bay illustrating the location of slide debris on the seafloor. (C) uninterpreted interpolated quasi-3D bathymetric image of the seafloor in and around Caracas Bay. (D) interpretation of (C), including the location of carbonate reef terraces, a possible channel, a zone of possibly missing carbonate terrace, and the location of profiles shown in Fig. 5.

connecting the western and eastern portion of Caracas Bay is man-made (Figs. 1, 4). Therefore, we propose that the channel that runs north-south along the western half of the bay is the down-dip extension of a now-filled channel that once cut through Caracas Bay into Spanish Water (Figs. 1, 4). Silt and other particulates were likely transported into the western half of the bay along this channel and may have muddied the waters in this region, offering one explanation for why less reef growth occurred along the northwestern portion of the bay.

## OBSERVATIONAL CONSTRAINTS ON SLIDE TIMING

Constraining slide timing without robust radiometric data represents a challenging task filled with dangerous assumptions and potential pitfalls. Nonetheless, first-order observations shed some light on when this slide likely occurred. Our observations offer insight into the initial shape of the slide rupture surface. We use insights from our observations in

conjunction with coral growth rates and sea level curves to place constraints on sliding timing.

The age and location of coastal reef terraces and the existence of associated erosional sea level highstand markers offer useful constraints on slide age. Previous studies indicate that the last globally significant sea level highstand occurred at 116–125 ka (Thompson and Goldstein, 2005; 2006) (Fig. 5C). Exact estimates for mean sea level during this highstand are equivocal, however, most studies suggest sea level was 2.5–8 m higher than today (e.g. Stirling et al., 1998; Hearty and Vacher, 1994; Vezina et al., 1999; Blanchon and Eisenhauer, 2001; Zazo, 1999). Evidence for this sea-level highstand exists across Curacao in the form of an exposed near-horizontal lower terrace reef formation that fringes most of the island's shoreline (Focke 1978; Schellmann et al., 2004) (Fig. 1). Electron spin resonance dates indicate the lower terrace is the youngest terrace on Curacao, with an age of ~122 ka, consistent with the timing of the last sea-level highstand (Schellmann et al., 2004).



Although the lower terrace exists around most of the island, the lower terrace is conspicuously absent in the immediate vicinity surrounding Caracas Bay (De Buissonje and Zonneveld, 1974) (Fig. 1). The lack of a lower terrace surrounding Caracas Bay indicates either (1) coral failed to grow in the bay during the highstand, or (2) the lower terrace formed but has since been removed. Given that corals currently flourish in and around the clear waters of Caracas Bay as in most parts of Curacao's coast, it is unlikely that coral growth would have been impeded during the last highstand only around Caracas Bay. We therefore infer that removal of the lower reef terrace during sliding offers the most plausible explanation for the missing lower terrace around Caracas Bay. This suggests the Caracas Bay Slide has a *maximum* age of ~122 ka.

Erosional highstand markers, often called "erosional notches" since they generally appear as horizon-parallel indentations cross-cutting sea-cliffs, may form during prolonged stillstands of relative sea level preceded and followed by relatively rapid sea level change (Newmann, 1966; Focke, 1978; Vezina et al., 1999; Hearty and Vacher, 1994). These notches are caused primarily by bioerosion, but also chemical, and mechanical weathering in the intertidal zone (e.g. Trudgill, 1987). Lower reef terraces and erosional notches are ubiquitous along coastlines in tropical oceans and have been used in the past to constrain uplift rates and geologic age (e.g., Taylor and Bloom, 1977).

Across much of the north coast of Curacao an erosional notch exists approximately 10 m above sea-level where the top of the lower terrace intersects the steep slope to an older higher middle terrace (Schellmann et al., 2004; Focke, 1978; Fouke et al., 1996; De Buissonje 1974). The 10 m notch likely formed during the last interglacial, and its anomalously high elevation (most notches from the last interglacial exist between 2.5 – 8 m) is likely due to a few meters of uplift along the northwest shore of the island during the past ~122 ka (Schellmann et al., 2004; De Buissonje and Zonneveld, 1976).

Although the lower terrace and erosional notch exist 8–10 m above sea-level along much of the north shore, along the south shore the lower terrace and notch are located at lower elevations. For example, in the Caracas Bay area and along the southeast shore of Curacao the lower reef terrace is no more than 4 to 5 m above sea level (Schellmann et al., 2004). This observation suggests a much slower (or negligible) uplift rate along the southeast half of the island compared to the northwest half since the last interglacial period (Schellmann et al., 2004). The analysis also indicates that if an erosional notch exists in

Caracas Bay from the last interglacial, it should occur closer to 4 – 5 m above sea level around Caracas Bay, and not ~10 m above sea level, as suggested by previous studies (De Buissonje and Zonneveld, 1976).

Although no clear notch exists above the shoreline in the western headwall where mass wasting is ongoing, a weak but clearly identifiable notch exists at ~4 m above sea level in several slide debris blocks along the north shore of Caracas Bay (Fig. 3B). However, the erosional notches within the slide debris appear poorly developed and not as severely eroded as most erosional notches found around the island. Although we were unable to reach the notch and measure directly its exact dimensions, from remote observation, we estimate the amount of inward erosion at the 4 m notch found in slide debris is a few centimeters with a vertical width of ~30 cm (Fig. 3B).

In general, other erosional notches found around Curacao appear more deeply cut and more pronounced than the notch observed in the slide debris at Caracas Bay. Many notches on Curacao are incised several meters and can be several meters in height from top to bottom. For example, the present day notch found at the water line in the slide debris at Caracas Bay indicates perhaps as much as ~1 m of inward erosion (Fig. 3B).

Why the erosional notch found ~4 m above sea level in slide blocks is so shallowly eroded compared to both current and older sea-level high-stand notches remains unclear. Adding to this uncertainty is the existence of other well defined erosional notches found across Curacao at ~4 m above sea level, although many of these notches appear associated with geological unconformities (Schellmann et al., 2004). Notch erosion rates can be highly variable and site specific. Nonetheless, along many shorelines where carbonates exist, it often takes only a 1000 years to generate notches 0.5 m deep if sea level remains relatively constant (e.g. Spencer, 1985).

Although it is impossible to confirm without more detailed study why only a shallow notch four meters above sea level exists along Caracas Bay slide blocks, one hypothesis is that the slide (and block emplacement) occurred near the end of the Late-Pleistocene sea-level high stand, approximately 116 ka. This hypothesis offers an explanation for why (1) no trace of the lower reef terrace exists within Caracas Bay and also (2) why there is only a weak erosional notch from the last interglacial sea-level high stand.

Comparison of carbonate terrace formation with sea level curves offers further support for this theory. Our marine survey along the eastern half of Caracas Bay suggests significant coral growth has occurred since sliding. As noted

previously, no discernable slide debris exists along the eastern half of the bay where two carbonate platforms are interpreted (Figs. 4 and 5). Nonetheless, given that slide debris exists both along the shoreline and in deeper water adjacent to the platforms, it is unlikely that such debris was not originally deposited in the region where the 40 m-deep reef platform now resides. We therefore postulate that post-slide reef growth ultimately covered and removed all traces of slide debris in the eastern half of Caracas Bay.

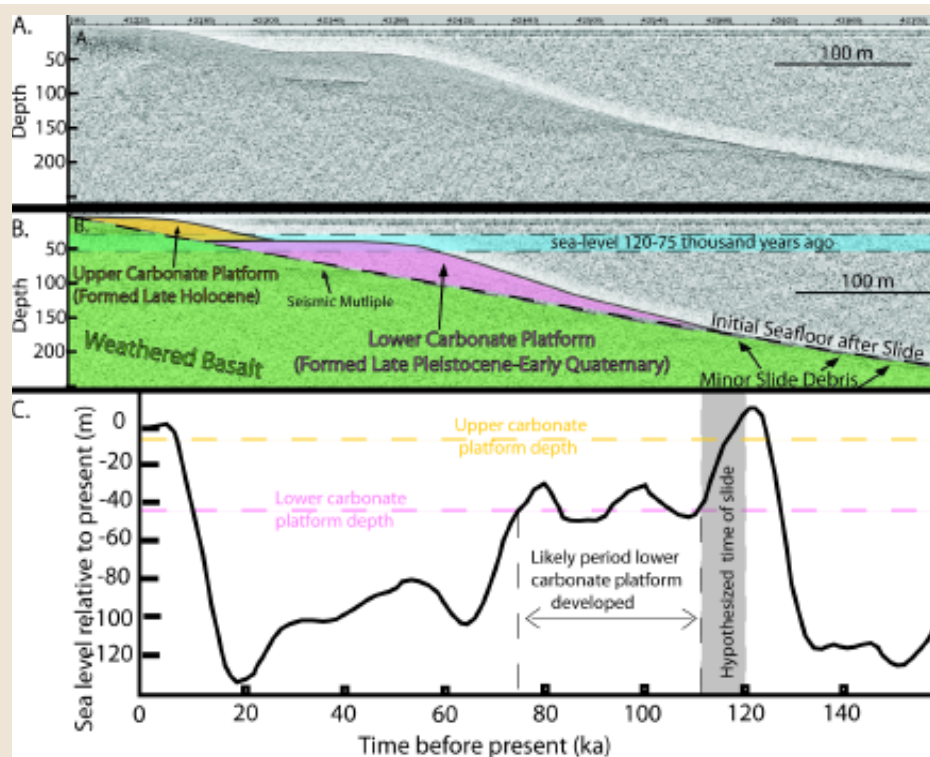
Using basic field observations to reconstruct the rough original shape of the Caracas Bay slide, we can estimate how terrace formation occurred. At the north shore of the bay, slide debris rests directly on top of basalt clay, the likely slide rupture surface (Figs. 1, 3B). As a minimum estimate for the base of the slide, we postulate that the slide debris observed in the 3D seafloor image rests on the original slide rupture surface (Figs. 4, 5). Therefore, we assume the depth of the slide rupture surface is approximately 130–150 m below present day sea-level in the southwestern portion of the bay where the largest underwater slide debris exists (Fig. 4). Using the location and depth of slide debris both on and off shore and assuming a strike direction near  $100 \pm 15$  degrees, we calculate a minimum apparent dip of ~8–10° for the slide rupture surface (Fig. 5). This is consistent with the dip of the basalt/limestone contact and the regional seafloor slope, further supporting the hypothesis that failure occurred along this contact.

From the estimated dip of the slide rupture surface, we calculate a cross-section shape of the bay along one of our chirp profiles in 2D (Fig. 5B). Comparison between our estimated shape of the seafloor in Caracas Bay with the bay's current shape suggests the eastern carbonate platform located at ~40 m depth has grown ~60 m vertically since the slide occurred (Figs. 5A, B).

We can use coral reef growth rates alone as one way of constraining slide age. In shallow, clear-water environments where seafloor rubble exists, the accumulation rates for coral reefs vary from 1 to as much as 21 mm/yr, depending on wave action, surf-level, water clarity, and coral species present (Montaggioni, 2005). Direct measurements of coral reef growth rates on southern Curacao indicate that coral reefs in this region grew at a rate between 1 – 4 mm/yr during the past ~10,000 years (Focke, 1978). Using these growth rates and a maximum vertical thickness for coral reef growth of 60 m, we infer the slide is at least 15 ka, but perhaps older than 60 ka.

Nonetheless, our terrace formation analysis completely ignores possible sea-level fluctuations





**Figure 5.** (A) uninterpreted 2D chirp profile across the bay. (B) interpreted version of (A). Note the anomalously flat seafloor at ~40 mbsl (meters below sea level), interpreted as a reef terrace that formed since sliding occurred. Another smaller terrace exists at <10 mbsl. (C) sea level curve for the last 160 ka (adapted from Martinson et al., 1987, and Fleming et al., 1998).

which can impede coral growth. Furthermore, it also ignores the key question of why lower terrace formation abruptly stopped at 40 m below sea-level. To address these issues we look closely at sea level curves since the end of the Pleistocene (~122ka), the inferred maximum possible age of the slide (Fig. 5 C).

As noted previously, there has been minimal vertical uplift along the southeastern coast of Curacao during the Quaternary; we can therefore use global sea level curves as direct proxies for sea-level at Caracas Bay. Analysis of Late Pleistocene-Quaternary sea level curves offers valuable insight into how terrace formation likely occurred in Caracas Bay following the slide. Immediately following the Pleistocene (~116 ka), sea level drops to approximately 40-50 m below current sea level (Fig 5.C), where it more or less remains for the next 35 ka. Sea level then precipitously drops for the next ~60 ka, before rebounding rapidly during the Holocene. We propose that the lower (40 mbsl-meters below sea level) carbonate terrace formed between 116-75 ka, when sea level maintained a relatively constant depth of ~45 m below current sea level. This assumes the coral grew ~60 m vertically during this period (approximately 50 ka) (Fig. 5B, C), or approximately 1.2 mm per year which is well within estimate limits of coral growth rates at

Curacao (Focke 1978). The sustained sixty thousand years of sea-level drop beginning 75 ka explains why the lower carbonate terrace abruptly terminates at 40 m below sea level, but does not explain why the terrace failed to redevelop as sea level rose during the Holocene. Our best guess as to why the lower terrace failed to redevelop during Holocene sea level rise is that coral growth simply could not keep up with the rapid ~120 m rise in sea level that occurred in just 7 thousand years (from 15-7 ka). This rise in sea level corresponds to a rate of ~17 mm/yr, well above the maximum observed coral growth rates of 4 mm/yr at Curacao. Coral growth rates drop sharply with depth below sea level, and it is therefore unlikely any significant coral growth now occurs at the 40 m platform. We suspect that the smaller, shallower platform ringing Caracas Bay at <10 m depth recently grew outward from the shoreline. Sea level has been relatively constant for the past 8 ka, and assuming a maximum coral growth rate of ~4 mm/yr, we would expect this platform to extend ~30 m offshore, similar to what we observe in our marine data (Fig. 5A, B). Nonetheless, the entire story of how Caracas Bay formed cannot be explained completely with carbonate platform growth rates and sea level curves. For example, why does no 40 mbsl carbonate platform exist on the far western edge of Caracas Bay? Without

a doubt, intermittent, smaller-scale failures also shaped Caracas Bay; and we propose the lack of a lower submarine carbonate platform at 40 mbsl on the extreme western edge of Caracas Bay is the result of either intermittent erosion and mass wasting along the western cliff face or reduced water clarity due to run off (Fig. 4). Ultimately, we will use detailed 2D and 3D coral growth models to constrain further how terraces formed and when sliding occurred.

## SUMMARY AND CONCLUSIONS

Our preliminary analysis suggests that sliding occurred near the end of the Pleistocene during the last significant sea level high-stand (~116 ka). Starting approximately 122 ka, sea level rose rapidly over a few thousand years from ~120 m below present sea level to perhaps 10 m above present levels, where it remained relatively constant until the end of the Pleistocene (e.g. Thompson and Goldstein, 2005). Although it is difficult to determine exactly when the slide occurred without more detailed dating of coral terraces and erosional notches, we propose that failure occurred near the end of the last major sea-level highstand about 116 ka, when the contact between the basaltic basement of the island and the Quaternary coral terrace was partially, if not fully submerged. Many studies suggest saturated clays exposed to long periods of low strain will maintain only a fraction of the cohesive strength of normal sediments, and therefore, are prone to failure (e.g. Carlisle, 1965; Byerlee, 1978). It is therefore possible that failure occurred at the site in part because the top of the Cretaceous basaltic layer became progressively more saturated and weaker as water permeated along the clay contact during sea level rise at the end of the Pleistocene.

What ultimately triggered the Caracas Bay Slide remains unclear, however, it's well known that subduction zone earthquakes often generate carbonate slope failures (e.g. Reid and Tabor, 1919; Tappin et al., 1999). Curacao experiences little seismic activity and has a relatively low probability of experiencing significant earthquake-induced ground accelerations compared to most of the Caribbean (e.g. Tanner and Shedlock, 2004; Perez, 1997). Nonetheless, the island is situated within 150 km of a major subduction zone, the South Caribbean deformed belt (Gorney et al., 2007; Magnani et al., 2009) where the potential for large, if infrequent, earthquakes exists (Perez et al., 1997; 2001), and sea level is once again at Late Pleistocene levels where much of the clay surface is submerged. Although other slide triggers, such as flood-induced elevated fluid

pressures, cannot be ruled out, we suggest that infrequent, large earthquakes along the Caribbean-South American plate boundary represent a logical slide-trigger for the region. Using marine and land-based geological observations, we place new constraints on the age of the Caracas Bay slide. Our combined analysis of Quaternary shoreline notches, submarine seafloor images of Caracas Bay, and inferred submarine carbonate terrace formations suggests the slide is no older than 122 ka; probably no younger than 15 ka, with our best estimate for slide occurrence at ~116 ka.

Traditional methods for determining slide age incorporate sediment coring techniques that require a depositional environment above the slide contact and the hope that datable material exists above. Our methods demonstrate a means of constraining slide age in shallow erosional submarine environments where traditional sediment coring techniques fail. Although this study focuses on the Caracas Bay slide, the general techniques described here can be applied to many other locations, since coral reef growth rates and the chronology of late Quaternary terraces and notches exists along many other shoreline where active tectonics, volcanism, and near-shore sliding occurs (e.g. Cox et al., 2008; Webster et al., 2004; Clouard et al., 2001; Taylor and Bloom, 1977; Fairbridge, 1950). Thus, this technique may be applied broadly to make first-order assessments of slide age at similar shoreline marine terrace sites.

## ACKNOWLEDGEMENTS

This work was supported by a grant from the Algemeen Pensioenfonds van de Nederlandse Antillen (APNA) to MH and PM with additional funds provided by the Geology Foundation at The University of Texas, Jackson School of Geosciences. We thank Niels Jorissen of Dive Charter Curacao for his help collecting Chirp data; Karel Marchena and Miriam Jonker, and Adolphe Debrot for logistical support; Rebecca Boone and Will King for assistance with land-based field work, and C. Frohlich and W. Wright for constructive reviews.

## REFERENCES

- ALEXANDER, C.S., 1961, The marine terraces of Aruba, Bonaire, and Curacao, Netherlands Antilles. *Assoc. Amer. Geograph. Ann.*, 51, 102-123, Tulsa, Oklahoma.
- ANDERSON, M., HOLCOMBE, L., FLORY, R., RENAUD, J.P., 2008, Implementing low-cost landslide risk reduction: a pilot study in unplanned housing areas of the Caribbean. *Nat. Hazards*, 47 (3), 297-315
- BALLANCE, P.E., 1991, Gravity flows and rock recycling on the Tonga landward trench slope—relation to trench-slope tectonic processes. *J. Geol.*, 99 (6), 817-827.
- BINTANJA, R., VAN DE WAL, R.S.W., OERLEMANS, J., 2005, Modeled atmospheric temperatures and global sea levels over the past million years, *Nature*, 437, 125-128
- BYERLEE, J.D., 1978, Friction of Rocks, *Pure Appl. Geophys.*, 116, 615-626
- CALLOT, P., SEMPERE, T., ODONNE, F., ROBERT, E., 2008, Giant submarine collapse of a carbonate platform at the Turonian-Coniacian transition: The Ayabacas Formation, southern Peru, *Basin Res.*, 20 (3), 333-357
- CARLYLE, D., 1965, Sliding Friction and Overthrust Faulting, *J. Geol.*, 73 (2), 271-292
- COX, R.T., LUMSDEN, D.N., GOUGH, K., LLOYD, R., TALNAGI, J., 2008, Investigation of late Quaternary fault block uplift along the Montagua/Swan Island fault system: Implications for seismic/tsunami hazard for the Bay of Honduras, *Tectonophysics*, 457 (1-2), 30-41
- CLOUARD, V., A. BONNEVILLE, P.Y. GILLOT, 2001, A giant landslide on the southern flank of Tahiti Island, French Polynesia. *Geophys. Res. Lett.*, 28, 2253-2256
- DENSMORE, A.L., HOVIUS, N., 2000, Topographic fingerprints of bedrock landslides, *Geology*, 28 (4), 371-374
- FAIRBRIDGE, R. W., 1950, Landslide Patterns on Oceanic Volcanoes and Atolls, *The Geographical Journal*, 115 (1-3), 84-88
- FLEMING, K., JOHNSTON, P., ZARTZ, D., YOKOYAMA, Y., LAMBECK, K., AND CHAPPELL, J., 1998, Refining the eustatic sea-level curve since the Last Glacial Maximum using far- and intermediate-field sites, *Earth Planet. Sc. Lett.*, 163 (1-4), 327-342
- FOCKE, J. W. 1978, Limestone cliff morphology on Curaçao (Netherlands Antilles) with special attention to the origin of notches and vermetid/coralline algal surf benches ("cornices", trottoirs"). *Z. Geomorph. N. F.*, 22, 329-349.
- FOUKE, B. W., BEETS, C. J. MEYERS, W. J., HANSON, G. N., AND MELILLO, A. J., 1996, <sup>87</sup>Sr/<sup>86</sup>Sr chronostratigraphy and dolomitization history of the Seroc Domi Formation, Curaçao (Netherlands Antilles). *Facies* 35, 293-320.
- FRYDMAN, S., TALESNICK, M., GEFFEN S., SVARZMAN, A. 2007, Landslides and residual strength in marl profiles in Israel, *Eng. Geol.*, 19 (1-2), 36-46
- GORNEY, D., ESCALONA, A., MANN, P., MAGNANI M.B., AND BOLIVAR STUDY GROUP, 2007, Chronology of Cenozoic tectonic events in western Venezuela and the Leeward Antilles based on integration of offshore seismic reflection data and on-land geology, *AAPG Bulletin*, 91 (5), 653-684
- HEARTY, P.J., AND VACHER, H.L., 1994, Quaternary stratigraphy of Bermuda: a high-resolution pre-Sangamian rock record: *Quaternary Sci. Rev.*, 13, p 685-697.
- HIPPOLYTE, J. C., AND MANN, P., in press, Neogene-Quaternary tectonic evolution of the Leeward Antilles Islands (Aruba, Bonaire, Curacao) from fault kinematic analysis, *Mar. Petrol. Geol.*
- MARTINSON, D.G., PISIAS, N.G., HAYS, J.D., IMBRIE, J., MOORE, T.C., AND SHACKLETON, N.J., 1998, Age dating and the orbital theory of the ice ages: Development of a high resolution 0 to 300,000-year chronostratigraphy, *Quaternary Research*, V. 27, no. 1, p 1-29
- MAGNANI M.B., ZELT C.A., LEVANDER A., SCHMITZ M., 2009, Crustal structure of the South American-Caribbean plate boundary at 67°W from controlled source seismic data. *J. Geophys. Res.* 114(B2): B02312.
- MONTAGGIONI, L.F., 2005, History of Indo-Pacific coral reef systems since the last glaciation: Development patterns and controlling factors. *Earth-Sci. Rev.*, 71, 1-75
- MUESSIG, K.W., 1984, Structure and Cenozoic tectonics of the Falcon Basin, Venezuela, and adjacent areas. In: Bonini, W.E., Hargraves, R.B. and Shagam, R. (eds.), *The Caribbean-South American Plate Boundary and Regional Tectonics*. Geological Society of America Memoirs, 162, 217-230, Boulder
- NEWMANN, A.C., 1966, Observation on coastal erosion in Bermuda and measurements of the boring rate of the sponge *Cliona lampa*, *Limnol. Ocean.*, 11, 92-117.
- OLSON, S.L., HEARTY, P.J., 2009, A sustained +21 m sea-level highstand during MIS 11 (400 ka): direct fossil and sedimentary evidence from Bermuda, *Quaternary Sci. Rev.*, 28. (3-4), 271-285
- OTA, Y., CHAPPELL, J., BERRYMAN, KELVIN, OKAMOTO, Y, 1997, Late Quaternary paleolandslides on the coral terraces of Huon Peninsula, Papua New Guinea, *Geomorphology*, 19, 55-76
- PEDLEY, H.M., CUGNO, G., GRASSO, M., 1992, Gravity slide and resedimentation processes in a Miocene carbonate ramp, Hyblean Plateau, southeastern Sicily, *Sediment. Geol.*, 79, 189-202
- PEREZ, O. J., SANZ, C., AND LAGOS G., 1997, Microseismicity, tectonics, and seismic potential in southern Caribbean and northern Venezuela, *J. of Seismol.*, 1, 15-28.
- PÉREZ, O. J., R. BILHAM, R. BENDICK, J. R. VELANDIA, N. HERNÁNDEZ, C. MONCAYO, M. HOYER, AND M. KOZUCH, 2001, Velocity field across the Southern Caribbean Plate Boundary and estimates of Caribbean/South?American Plate Motion using GPS Geodesy 1994-2000, *Geophys. Res. Lett.*, 28 (15), 2987-2990.
- REID, H. F., AND S. TABER, 1919, The Porto Rico earthquakes of October-November 1918, *Bull. Seismol. Soc. Amer.*, 9 (4), 94-127.
- SCHHELLMANN, G., RADTKE, U., SCHEFFERS, A., WHELAN, F., KELLETAT, D., 2004, ESR Dating of Coral Reef Terraces on Curaçao (Netherlands Antilles) with Estimates of Younger Pleistocene Sea Level Elevations, *J. Coastal Res.*, 20 (4), 947-957
- SPENCER, T., 1985, Marine erosion rates and coastal morphology of reef limestones on Grand Cayman Island, West Indies, *Coral Reefs*, 4, 59-70
- TANNER, J.G., SHEDLOCK, K.M., 2004, Seismic hazard maps of Mexico, the Caribbean, and Central and South America, *Tectonophysics*, 390, 159-175.
- TAPPIN, D. R., ET AL. 1999, Sediment slump likely caused 1998 Papua New Guinea tsunami, *EOS*, 80 (30), 329,334,340.
- TAYLOR, F.W., AND BLOOM, A.L., 1977, Coral reefs on tectonic blocks, Tonga island arc: Proceedings of the Third International Coral Reef Symposium, Miami, v. 2, p. 275-281.
- TEN BRINK, U.S., GEIST, E.L., ANDREWS, B.D., 2006, "Size distribution of submarine landslides and its implication to tsunami hazard in Puerto Rico," *Geophys. Res. Lett.*, 33 (11)
- THOMPSON, W.G., AND GOLDSTEIN, S.L., 2005, Open-System Coral Ages Reveal Persistent Suborbital Sea-Level Cycles, *Science*, 308 (5720), 401-404.
- THOMPSON, W. G., AND S. L. GOLDSTEIN, 2006, A radiometric calibration of the SPECMAP timescale, *Quaternary Sci. Rev.*, 25(23-24), 3207-3215.
- TRUDGILL, S.T. 1987, Bioerosion of intertidal limestone, County Clare, Eire: 3. Zonation, process and form. *Mar. Geol.*, 7, 111-121.
- VEZINA, J., JONES, B., FORD, D., 1999, Sea-level Highstands over the Last 500,000 Years: Evidence from the Ironshore Formation on Grand Cayman, British West Indies, *J. Sediment. Res.*, 69 (2), 317-327
- VITALI, E., BLANC, G., LARQUE, P., DUPLAY, J., MORVAN, G., 1999, Thermal diagenesis of clay minerals within volcanic material from the Tonga convergent margin, *Mar. Geol.*, 157, 105-125.
- WARD, S. N., 2001, "Landslide tsunami," *J. of Geophys. Res.*, 106 (17), 3397-3400
- WARD, S. AND DAY, S., 2003, Ritter Island Volcano—lateral collapse and the tsunami of 1888, *Geophys. J. Int.*, 154, 891-902
- WEBSTER, J.M., WALLACE, L., SILVER, E., APPLEGATE, B., POTTS, D., BRAGA, J.C., RIKER-COLEMAN, K., GALLUP, C., 2004, "Drowned carbonate platforms in the Huon Gulf, Papua New Guinea," *Geochem. Geophys. Geosy.*, 5
- ZAZO, C., 1999, Interglacial sea levels, *Quatern. Int.*, 55, 101-113



**PRESIDENT'S COMMENTS**

# Changing Times, and Changing Formats for SEPM Publications

Let's face it: though I consider myself technologically savvy, in many ways I am still somewhat old-fashioned, and stubbornly cling to past customs. Take, for example, my morning cup(s) of coffee in the company of the local Waco-area newspaper. It's a ritual that I enjoy. But I've been told by my family and friends that people who want "real news" these days will read it online or catch it on a 24 hour cable channel, and that nobody reads their news in newsprint format anymore. The reported major declines in reader subscriptions and advertising revenues experienced by most newspapers, as well as the closure of some long-running papers, attest that this is happening.

## And so it goes with SEPM Journals and Special Publications

### Availability of Print Publications

I personally am a great fan of reading the print version of SEPM journals, both the *Journal of Sedimentary Research* and *PALAIOS*, as well as other geosciences journals. My favorite time is when the journals arrive in the mail and I then remove the clear plastic wrapping, scan the contents and toss it into my briefcase. Later that night, or on the weekend I will curl up in my favorite chair and read the best and latest science. But I realize that it may not be this way for much longer.

### Digitization, Cost, and Library Storage Space

Digitization of journals and other traditional print media is becoming increasingly prevalent. This is because it is far cheaper for publishers, and especially for not-for-profit societies such as SEPM,

to publish electronically. Authors can send PDF files to researchers, easily transmitting their published work, as opposed to the cumbersome process of mailing paper reprints. Students increasingly look for published literature on-line, and if it is not available on-line then some will go no further in their research efforts, and certainly not set their feet in the confines of a brick and mortar library! Libraries in turn, faced with diminishing storage space for print media, welcome digitization for its economy of space and, more often than ever before, ask whether our Geology Department would accept only an electronic subscription rather than continue to take the print version of journals to which we subscribe.

### Changes for SEPM

We currently offer our members the option of electronic-only access to our journals, or, with payment of a surcharge, the option of taking a print version as well. I have continued to exercise this option but I think that within the next few years we will likely see a phasing out and conversion to electronic-only SEPM journals. Please contact me, Executive Director Howard Harper, or any other current Council Member and let us know how this change will impact you.

### Other Future Concerns

Recently (01-20-2010) SEPM issued a statement on OSTP Open Access Policy blog site as part of an invited discussion phase. This effort was spear-headed by SEPM Executive Director Howard Harper, with input from many Council members. The entire discussion is

available on the SEPM website (see latest News items), but to briefly summarize, there is a potential threat looming to society-sponsored "not-for-profit" publishers to make all federally funded research published material "open access" to full text copies of published science articles. As Howard so aptly pointed out, scholarly publishing has always made it possible for anyone to have access to individual articles, with individuals usually writing or e-mailing the author for copies, or using their institution's library for access. My most recent encounter with this issue was when one of my students published a paper in a commercial journal (which I shall not name) and was queried about whether or not he wanted to have his article made "open access", for a fee in excess of \$1,000 US. This fee would have ensured that anyone anywhere could have freely accessed the document, whether they held a subscription or not to that journal. We declined to pay the fee this time. This example of the "author pays model" for subsidizing open access, if made mandatory for many funded research papers without careful planning, is of great concern to the Society. You are encouraged to visit the OSTP site and review the various comments, although the open comment period has now closed. SEPM will need to figure out just how to financially deal with the push for more and more direct online open access to scientific publication.

**Steve Driese, President  
SEPM Society for Sedimentary  
Geology**

# SEPM ELECTION RESULTS

## *SEPM Society for Sedimentary Geology 2010 New Council Members*

**President-Elect: Chris Fielding**, University of Nebraska, Lincoln, Nebraska

**Secretary-Treasurer: Diane Kamola**, University of Kansas, Lawrence, Kansas

**Research Councilor: Sam Bentley**, Memorial University of Newfoundland, St John's,  
Newfoundland, Canada

**International Councilor: Maria Mutti**, Universitat Potsdam, Potsdam, Germany

**SEPM Foundation President: Timothy Carr**, West Virginia University, Morgantown, West Virginia

...and thanks to the outgoing council members for their service

**Steve Driese** (Baylor University)

**John Snedden** (ExxonMobil)

**John Holbrook** (University of Texas – Arlington)

**André Strasser** (Universite de Fribourg)

...and to the other candidates who consented to run

**John Snedden** (ExxonMobil)

**Brenda Beitler Bowen** (Purdue University)

**Adam Woods** (California State University – Fullerton)

**Tetsuji Muto** (Nagasaki University)



SEPM is always in need of member volunteers for standing committee and ad hoc special assignments.

If you are interested in helping SEPM in its activities please contact:

Howard Harper (SEPM Executive Director – [hharper@sepm.org](mailto:hharper@sepm.org)).

**SEPM Recognizes and thanks the SEPM  
Global Ambassadors and their contribution to  
extending SEPM's presence around the world.**

**If you have not done so, please visit the  
Global Ambassador Webpages at the SEPM Website.**

- **Dr. Leonardo Borghi** (Universidade Federal Do Rio De Janeiro) – Brazil
- **Drs. Daidu Fan** (Tongji University) and **Xiumian Hu** (Nanjing University) – China
- **Drs. Santanu Banerjee** (ITT Bombay) and **Pradip Bosa** – India
- **Herman Darman** (Shell International EP) – Netherlands



# The Newest Editors of The Sedimentary Record

In our first issue as editors of *The Sedimentary Record*, we would like to ask the readership to join us in redefining and continuing to move this publication forward over the next three years.

Currently *The Sedimentary Record* is published quarterly in both online and paper format. In this format, it has existed since 2003. It traditionally contains peer-reviewed science articles on topics of broad and current interest to the membership of SEPM, as well as shorter articles addressing a variety of topics, including society business and media reviews. As we understand it, the primary purposes of this publication are to (1) be an outlet for disseminating information important to SEPM and (2) serve as a focal point for discussion of current topics and topics pertinent to the future of sedimentary geology.

As editors and members of SEPM, we would like to increase the role of *The Sedimentary Record* in giving SEPM members information and news about society activities by increasing the number of conference reports. We would also like to include short interviews of SEPM members that maybe newsworthy (i.e., awardees, medalists, research conferences reports, cruises, large projects, etc.). Additionally, we think that the future of our discipline and society lies with incoming students.

We would like to reserve space for some students to present their research project or their fieldwork or just share their passion and vision of sedimentary geology. In order to increase the amount of material in each issue, the digital online version may be expanded compared to the printed version, with shorter descriptions in the printed version referencing the larger online subjects. The online version may also be able to have added functionality, such as animations.

As for the all-important science content of the journal, we invite SEPM members to submit short manuscripts directly to us that incorporate new developments in sedimentary geology and short syntheses of state-of-the-art approaches, techniques, or integrated research. We have several topics that we think are increasingly relevant, but we wholeheartedly welcome all submissions. It is our hope to see publications concerning the role of biological organisms in producing or enhancing sediment production and preservation in a variety of environments, the use of new analytical techniques to solve challenging problems in sedimentary geology, and the ever-increasing quantification and modeling of all aspects of sedimentary processes.

Because we realize that in both academe and industry, publications are often evaluated using citation indices and other publication factors, we have started the process of making sure that *The Sedimentary Record* is recorded and recognized by various citation agencies (e.g., GeoRef Google Scholar and Web of Science). For the sake of readers and authors alike, we must all strive to have our efforts recognized. Great submissions and recognition tend to go hand in hand. Because in the future, we would like to increase the role and interactivity of the online *The Sedimentary Record*, we are seeking SEPM member suggestions on these topics. All of you are encouraged to contact us with your thoughts and ideas.

We are proud to be associated with this successful SEPM publication venue and look forward to working with many of you in the society in bringing exciting, important, current topics to publication both quickly and efficiently

***Xavier Janson, Wayne Wright and  
Ruarri Day-Stirrat***

# Sedimentary Geology Division

## GEOLOGICAL SOCIETY OF AMERICA

### GREETINGS SEPM AND GSA SEDIMENTARY GEOLOGY DIVISION (SGD) MEMBERS!

In this issue of the SGD Newsletter, we relay some highlight of events sponsored by SEPM and SGD at the 2009 GSA Annual Meeting in Portland and review the state of the division.

### 2009 GSA ANNUAL MEETING

The 2009 GSA Joint Annual Meeting was a resounding success for sedimentary geologists. The Sedimentary Geology Division hosted two events: the “Seds and Suds” Forum and Icebreaker, co-sponsored by SEPM on Saturday, October 17, and the Joint Sedimentary Geology Division and Limnogeology Division Business Meeting and Awards Reception, also sponsored by SEPM, on Tuesday, October 20.

The Seds and Suds event drew approximately 80 people, most of whom were students. The topic of the informal forum was, “What can we do for you? Getting the low-down on what students actually need from professional societies these days,” led by SGD Chair, John Holbrook. The students expressed many concerns about how professional societies operate and how their group can be better served. Some issues that resonated throughout the discussion included electronic access to society publications and networking, monetary support for field trips and short courses, information regarding graduate

programs or access to employment opportunities. Students consistently expressed a desire for societies to offer more web-based networking and educational opportunities. Although some praised professional societies for their recent forays into electronic publication access and web-based networking (Facebook, web pages, etc.), it is clear that the next generation of geologists will want much more in this area and cheaper electronic information access!

The call is open for suggestions for future discussion topics at Seds and Suds. If you have a topic you feel would benefit from an open forum discussion, please contact Richard Langford at [langford@utep.edu](mailto:langford@utep.edu).

**We also welcome sponsors for the next event at the 2010 GSA Annual Meeting in Denver.**

The Joint Sedimentary Geology Division and Limnogeology Division Business Meeting and Awards Reception welcomed 100 or so attendees, most of whom enjoyed a free beverage of their choice and munchies. After the Limnogeology business meeting and announcement of the Kerry Kelts Research award winners, the Sedimentary Geology Division events transpired. The Sedimentary Geology Division offered five Student Poster awards (see awardees listed below) and the Student Research Award, which was presented to **Eric Hogan** at the University of Tennessee at Knoxville.





**Citationist Kathy Marsaglia and 2009 L.L. Sloss Award recipient, Ray Ingersoll. Photo courtesy of Kelly Dilliard.**

Kathy Marsaglia delivered a warm citation for the 2009 Laurence L. Sloss awardee Ray Ingersoll, followed by an amusing, anecdote-rich slide show presentation by Ray. In addition, door prizes were awarded to several students attending the awards reception. Many thanks are also extended to Kelly Dilliard, John Holbrook, Bosiljka Glumac, and Paul Link, as well as our JTPC representatives, Troy Rasbury and Mark Kulp, for all of their help in making the Sedimentary Geology sessions and events a success.

## 2009 SGD POSTER AWARD RECIPIENTS

**Holly Buehler, University of New Mexico**  
**Chris Cassle, Colorado State University**  
**Eli Erickson, University of South Dakota**  
**Katherine Murray, Vanderbilt University**  
**Michelle Olson, University of New Mexico**

**Do you know a colleague who is particularly deserving of receiving the Laurence L. Sloss Award for Sedimentary Geology?**  
**Please forward nominations to the SGD Secretary/Treasurer, Linda Kah at [lickah@utk.edu](mailto:lickah@utk.edu).**

## STATE OF THE SEDIMENTARY GEOLOGY DIVISION

The Sedimentary Geology Division is financially healthy with approximately \$14,500 in the account as of September, 30, 2009. Most of the expenses incurred on an annual basis by the SGD are for events at the Annual Meeting and awards. The 2009 membership of the SGD decreased slightly (-0.8%) over 2008 membership to 1172 affiliates. Membership decline was mainly in the student and professional member categories, but was nearly offset by increases in recent graduates and senior fellows. The SGD would like to get more involved with sponsorship of events at GSA section meetings; please contact Dan Larsen ([dlarsen@memphis.edu](mailto:dlarsen@memphis.edu)) for more information.

## SGD PERSONNEL AND COMMITTEE ASSIGNMENTS FOR THE 2009-2010 YEAR.

- **John Holbrook** is the Chair.
- **Richard Langford** is the Vice-Chair.
- **Linda Kah** is the Secretary/Treasurer.
- The Joint Technical Program Committee (JTPC) representatives for SGD are **Troy Rasbury** and **Brenda Beitler Bowen**.
- **Kelly Dilliard** is the web manager.
- The Sloss Award Committee comprises:  
**Mike Arthur, Peter DeCelles, Ray Ingersoll,**  
**and Judy Parrish.**

# SEPM Activities at the New Orleans Annual Meeting

(All meetings listed will be at the JW Marriott unless otherwise noted.)

## Saturday, April 10

SEPM Council Meeting	9:00 a.m. – 5:00 p.m.	Maurepaus
----------------------	-----------------------	-----------

## Sunday, April 11

SEPM NAMS Board Meeting	3:00 p.m. – 5:00 p.m.	St Jerome
Exhibit Icebreaker	5:00 p.m. – 7:30 p.m.	Convention Center
Seds & Suds Reception	8:00 p.m. – 10:00 p.m.	Ile de France

## Monday, April 12

SEPM Exhibit, Booth #1645	8:30 a.m. – 5:30 p.m.	Convention Center
JSR Student Workshop	5:30 p.m. – 6:45 p.m.	Maurepaus
AAPG/SEPM Student Reception	6:00 p.m. – 8:00 p.m.	Sheraton New Orleans
SEPM Research Groups	7:00 p.m. – 10:00 p.m.	
Carbonate Research		
Clastic Diagenesis		
Deep Water Turbidites		
MMRG		
Sequence Stratigraphy		
Source-to-Sink		

## Tuesday, April 13

SEPM Exhibit, Booth #1645	8:30 a.m. – 5:30 p.m.	Convention Center
SEPM Business Luncheon	11:30 a.m. – 1:30 p.m.	Ile de France
SEPM Foundation Reception	6:00 p.m. – 7:00 p.m.	Orleans/Rosalie
SEPM President's Reception	7:00 p.m. – 9:30 p.m.	Ile de France

## Wednesday, April 14

SEPM Exhibit, Booth #1645	8:30 a.m. – 12:00 p.m.	Convention Center
---------------------------	------------------------	-------------------

### A Special Thanks to the Denver SEPM Annual Meeting Organizing Committee

Mike Blum, SEPM Vice Chair  
John Suter, SEPM Oral Sessions Chair  
John Holbrook, SEPM Poster Sessions Chair  
Mark Kulp, SEPM Field Trip Chair  
Vitor Abreu, SEPM Short Course Chair  
Md. Royhan Gani, SEPM Awards Chair

### Thanks to all the SEPM Annual Meeting Sponsors

BP  
Chevron  
Enerplus  
ExxonMobil  
Nexen, Inc  
Shell Exploration & Production



## Attention – SEPM Best Oral and Poster Awards for the 2010 New Orleans Meeting

This year SEPM is using a new method to identify the best talks and posters. Instead of individual volunteers being assigned as judges for each SEPM Session, all meeting attendees are being asked to identify the SEPM talk and poster which they heard or saw that had the most impact on them and their work – their “best”. There is a tear-out card in the program book which lists all of the SEPM Sessions being judged this way and space to write in the author and presentation title. Please fill in this ballot and take it to the SEPM Booth in the Exhibit Hall at the end of the meeting or go to the SEPM Website by Friday, April 16 to make your vote count. Make sure to put your name on the card also as there will be some prize drawings based on the ballots. More details are available on the SEPM Website [www.sepm.org](http://www.sepm.org).