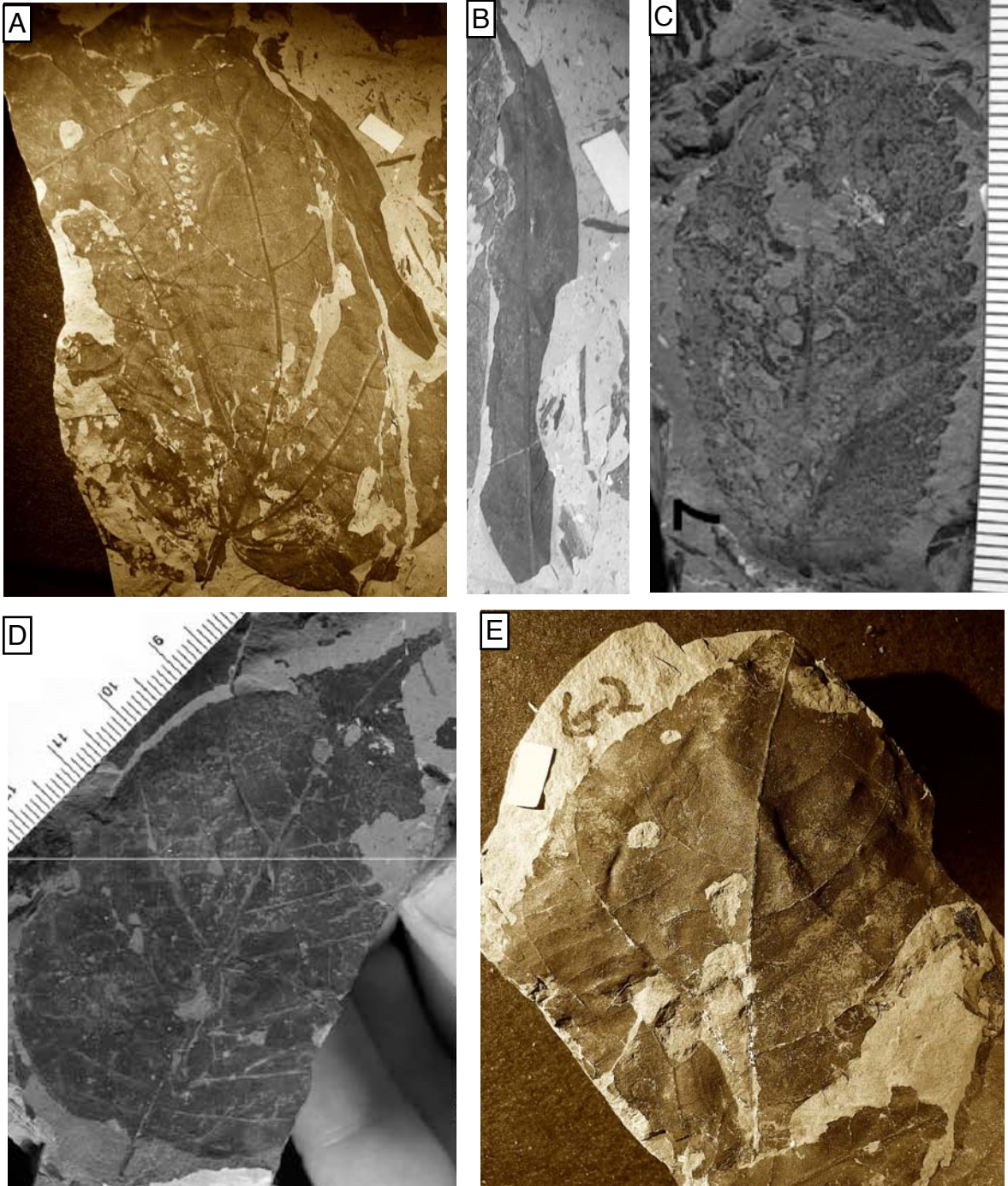
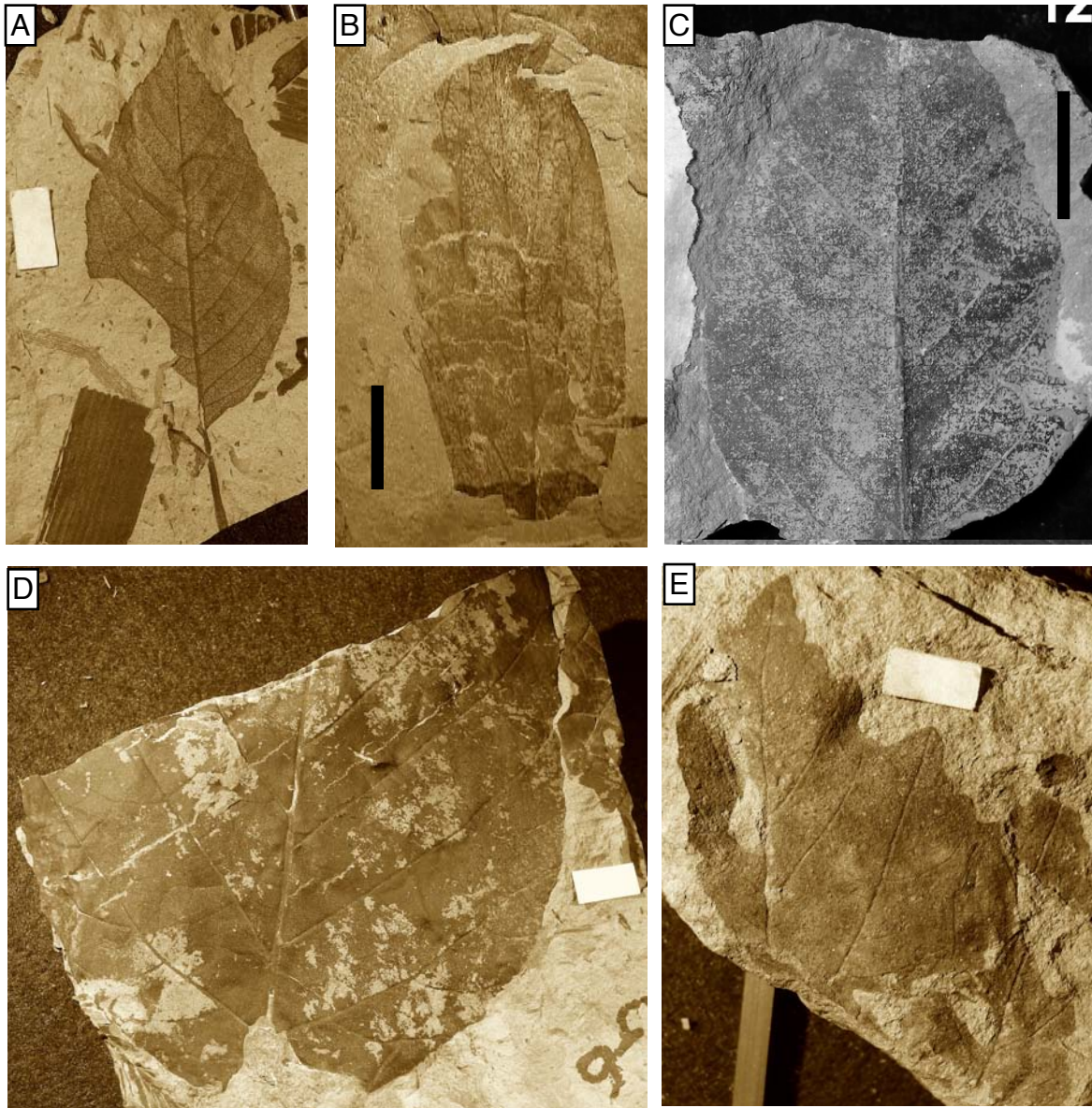


A - Morphotype D1; B - Morphotype D2; C - Morphotype D3; D - *Acer sp.*; scale bar 1.0 cm long.



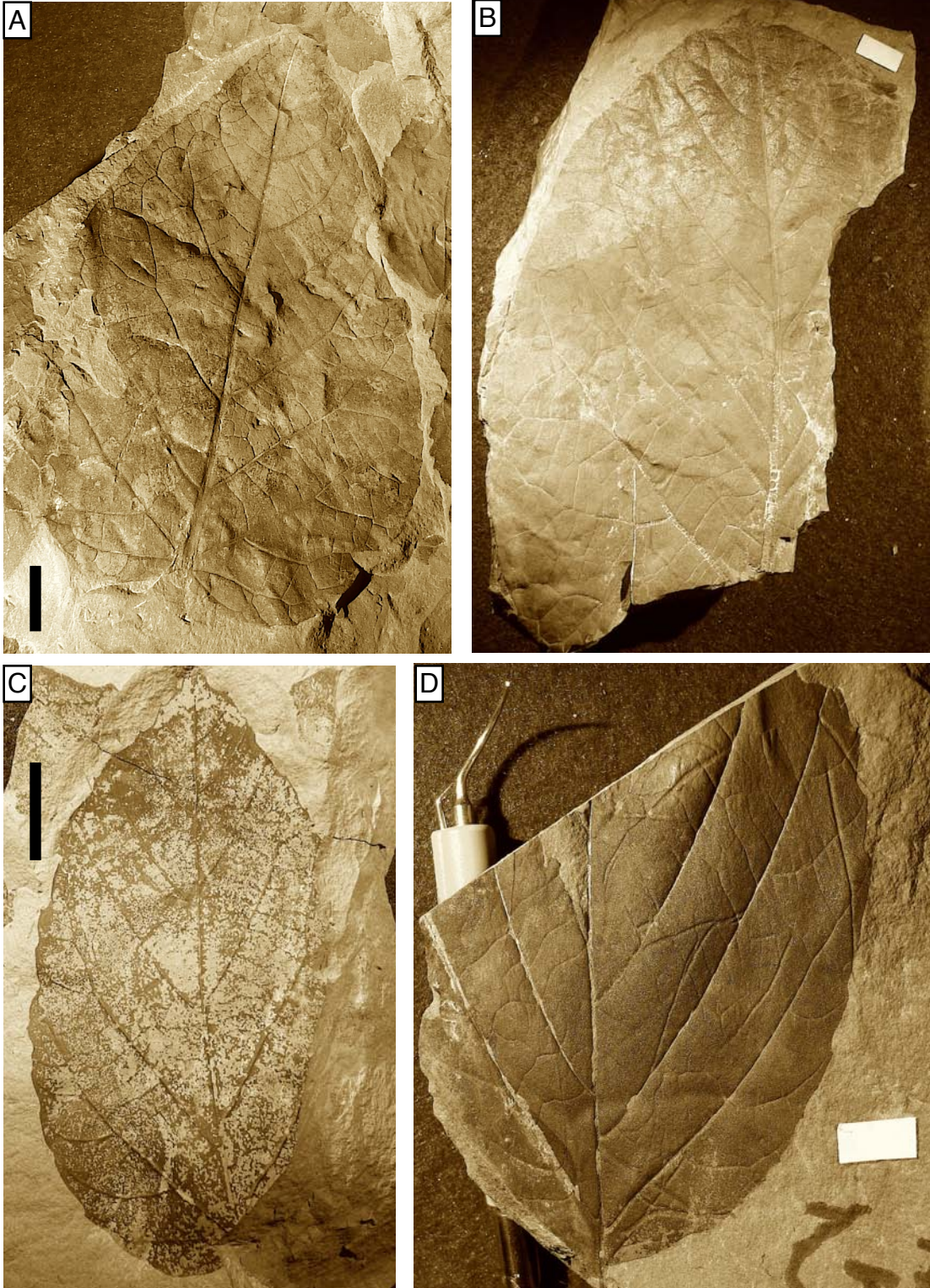


A - "*Dombeya*" *novi-mundi*.; B - Morphotype B7; C - *Chaetoptelea microphylla*; D - Morphotype B9; E - Morphotype B10; scale in mm or scale bar 1.0 cm long.



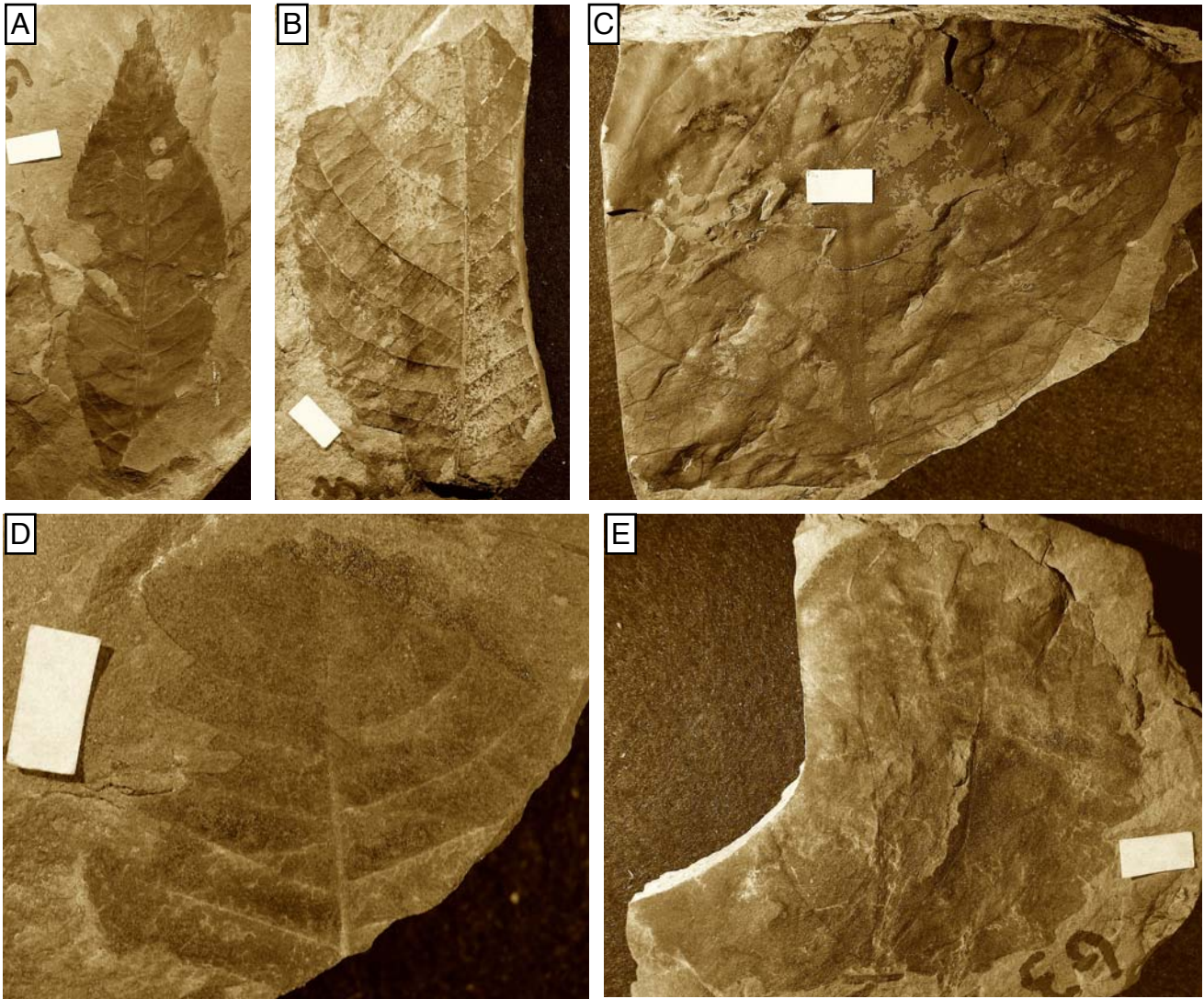
A - "*Sinowilsonia*" sp.; B - "*Hakea*" *alaskana*; C - Morphotype B13; D - Morphotype B14; E - "*Ampelopsis*" *acerfolia*; scale bar 1.0 cm long.





A - *Dicotylophyllum alaskana*; B - Morphotype C2; C - *Grewiopsis auriculaecordatus*; D - *Hamamelites inaequalis*; scale bar 1.0 cm long.





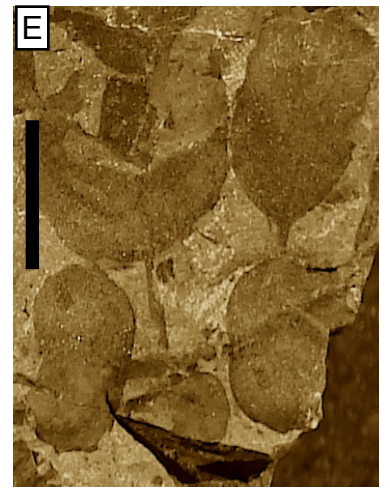
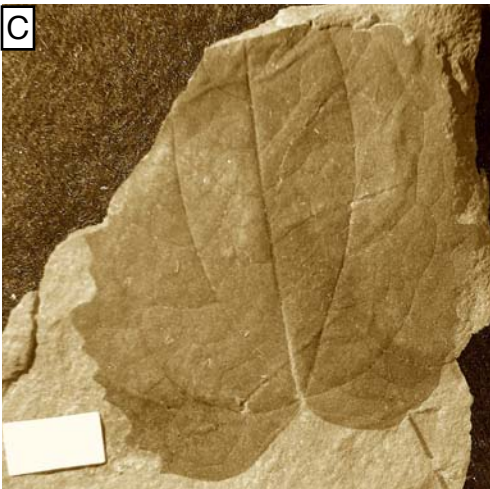
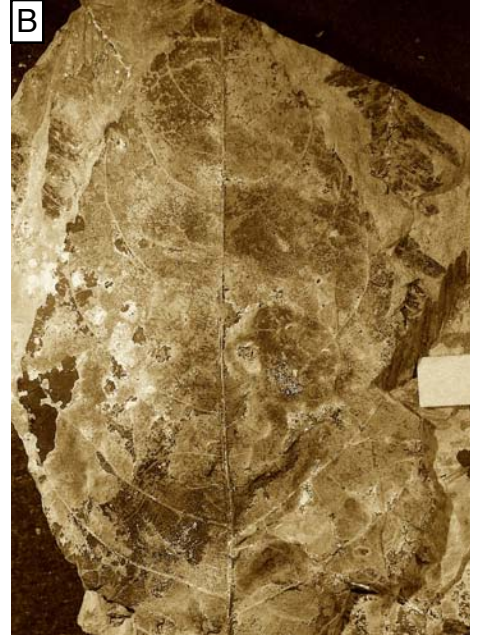
A - *Aesculus hickeyi*; B - *Carya antiquorum*; C - *Pterospermites dentata*; D - Morphotype C11; E - *Joffrea sp.*; scale bar 1.0 cm long.





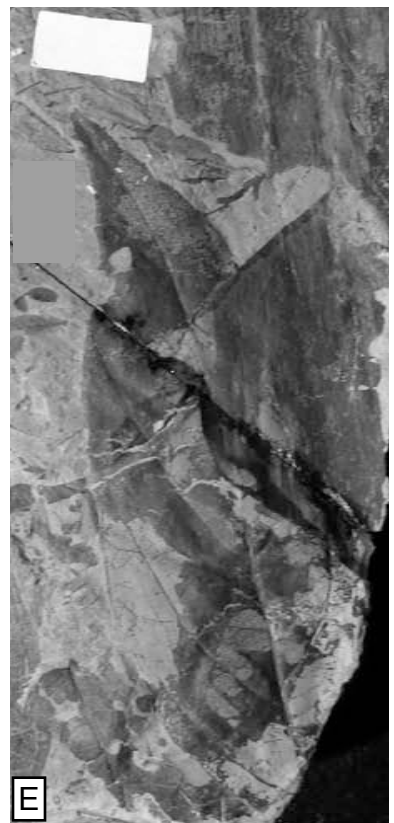
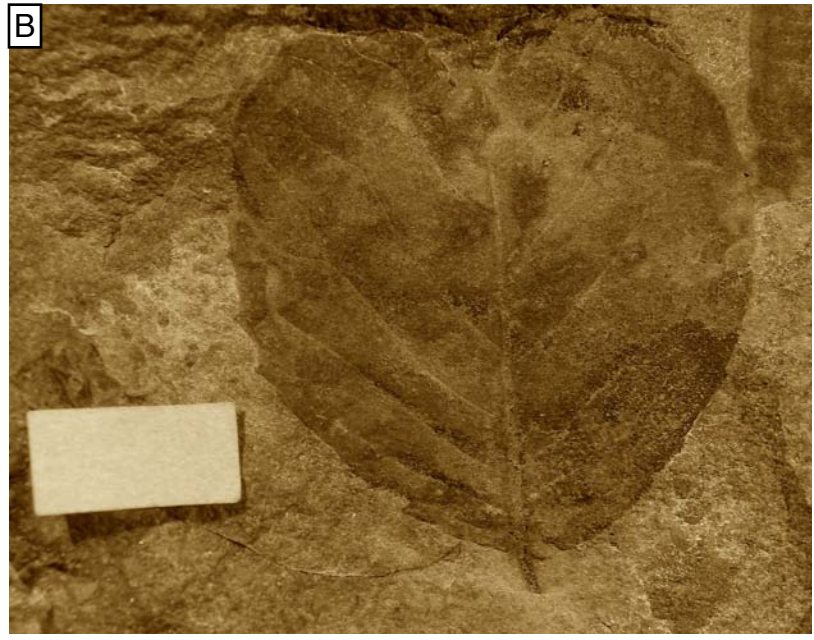
A - Morphotype C13; B - Morphotype C14; C - *Averrhoites affinis*; D - "*Magnolia magnifolia*"; E - Morphotype C19; F - Morphotype C21; scale in mm or scale bar 1.0 cm long.





A - Morphotype C22; B - Morphotype C24; C - *Dicotylophyllum richardsoni*; D - *Zizyphoides flabela*; E - "*Trapa*" *angulata*; scale bar 1.0 cm long.





A - "*Melisoma*" *longifolia*; B - Morphotype A3; C - Morphotype A4; D - Morphotype A5; E - Morphotype E1; scale in mm or scale bar 1.0 cm long.