

Figure 1. Locations of KTB and late Maastrichtian sequences along the Brazos River, Falls County, Texas.

Figure 2. Lithology, sample locations and Ir anomaly of the Brazos-1 section, Falls County, Texas.

Figure 3. Litholog and sample positions of the Cottonmouth Creek section, a tributary of the Brazos River, Falls County, Texas.

Figure 4. Lithologs and sample positions of the Cottonmouth Creek sections CMAW and CMB of the Brazos River tributary, Falls County, Texas. Note the two sequences are less than 50 m apart.

Figure 5. Lithology and sample location of the Brazos-3 section, Falls County, Texas.

K-T Boundary localities, Brazos River, Falls County, Texas

- 1986 Wells, (Hansen et al., 1987; Keller, 1989; Schulte et al., 2006; this study)
- 2005 Wells (DOSECC), (Keller et al., 2007; this study)
- 2005 - 2007 outcrops (Keller et al., 2007, 2009, this study)
- 1980s (Hansen et al., 1987; Keller, 1989)
- 1980s (Hansen et al., 1987; Yancey, 1996; Gale, 2006)

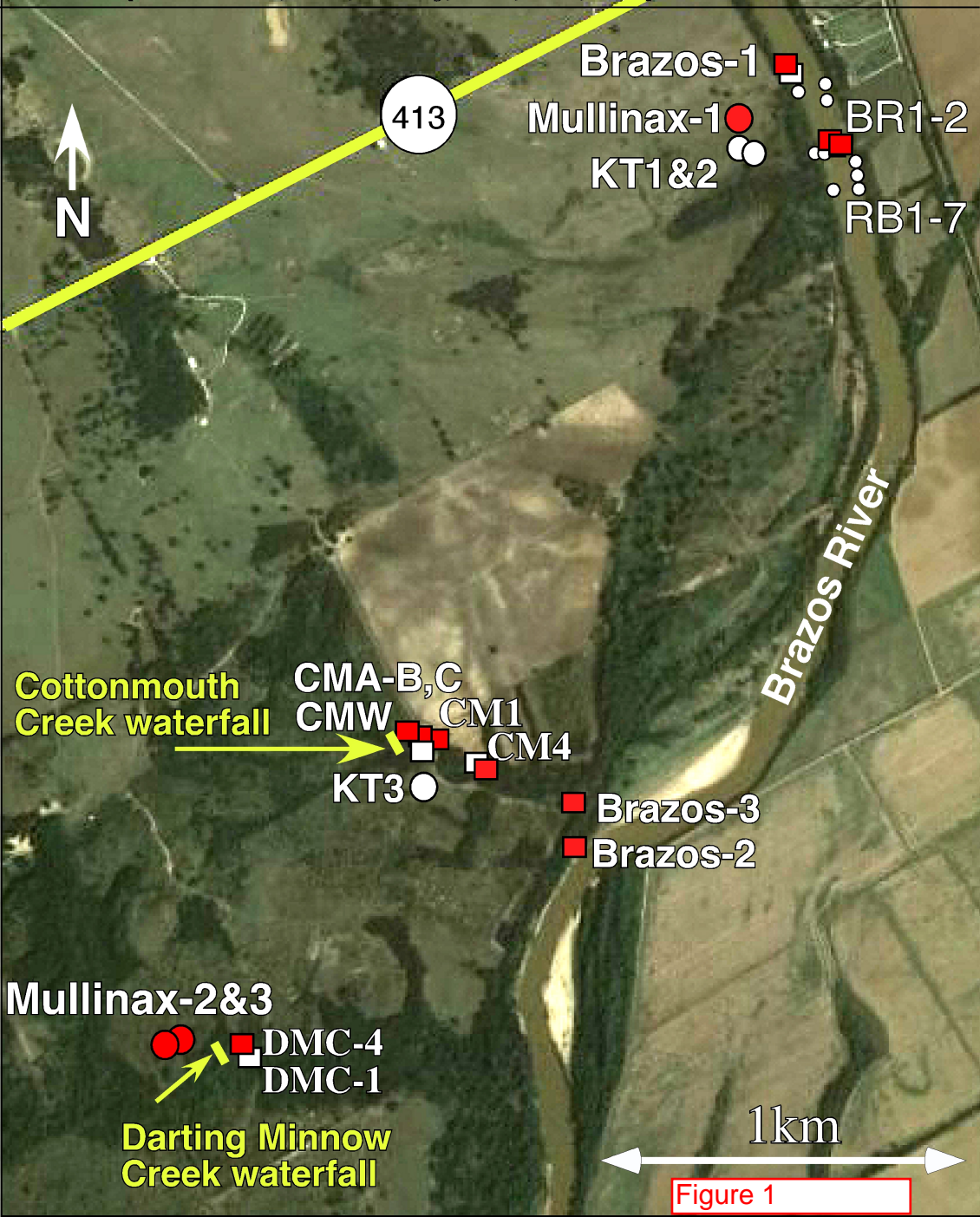
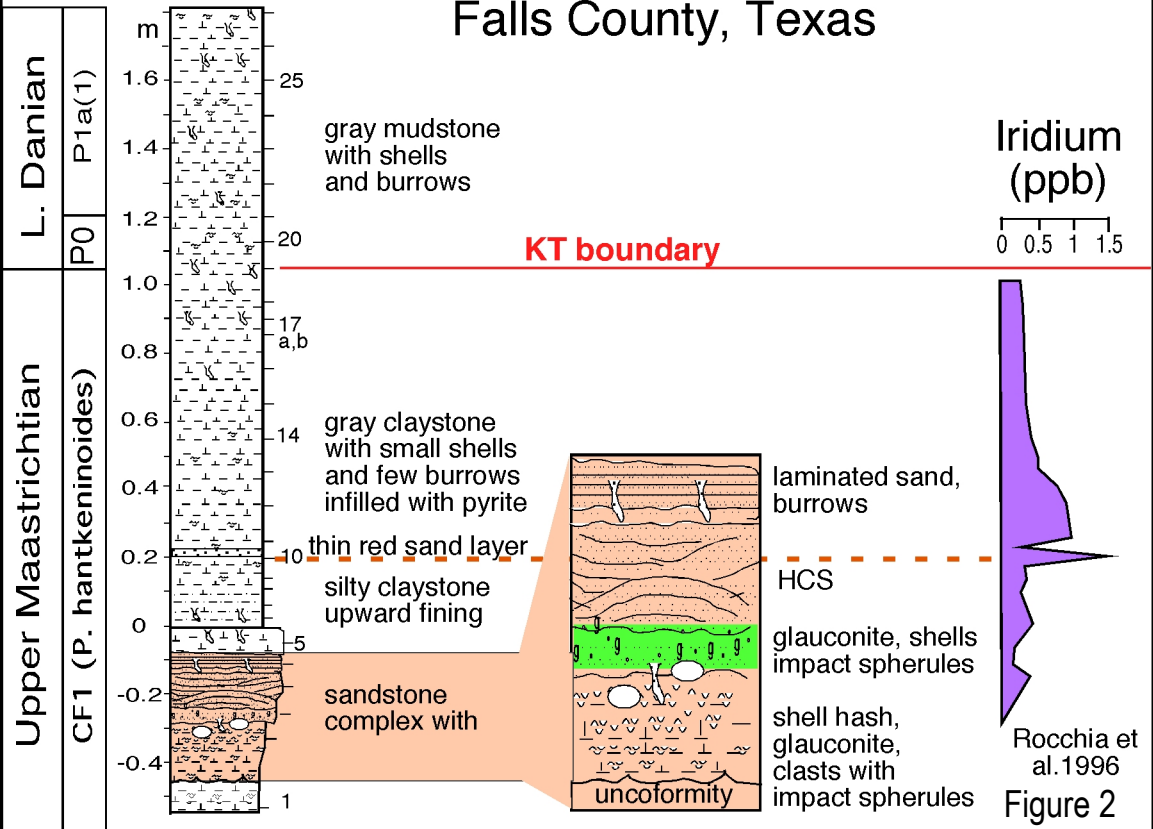


Figure 1

Brazos-1

KT Transition at Brazos-1, Falls County, Texas



Brazos, Texas Cottonmouth Creek CMAW Section

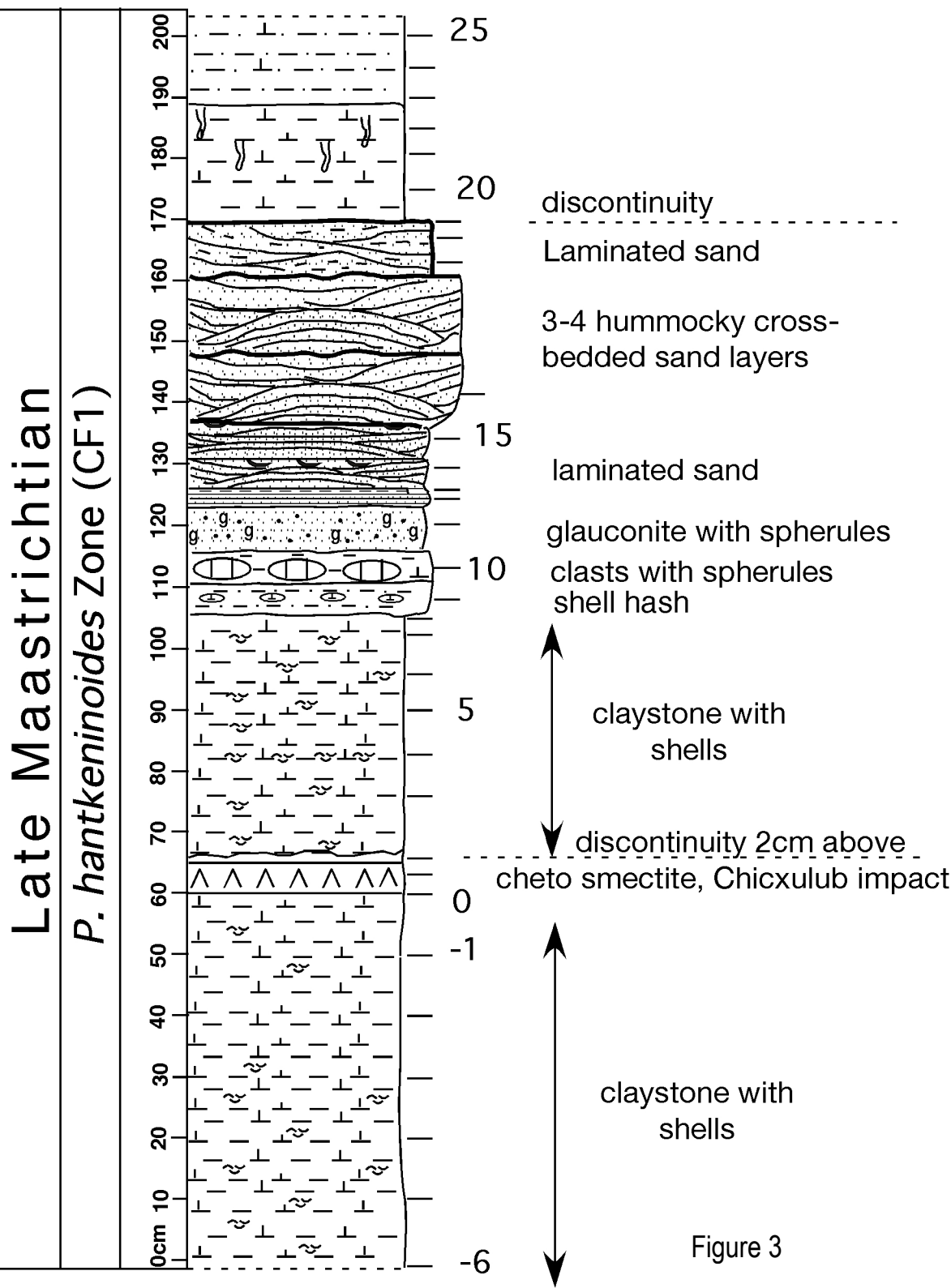


Figure 3

LATE MAASTRICHTIAN	EARLY DANIAN		
<i>M. prinsii</i> Zone (CC26b)	NP1a		NP1b
	P0	P1a(1)	P1b
<i>P. hantkeninoides</i> Zone (CF1)			

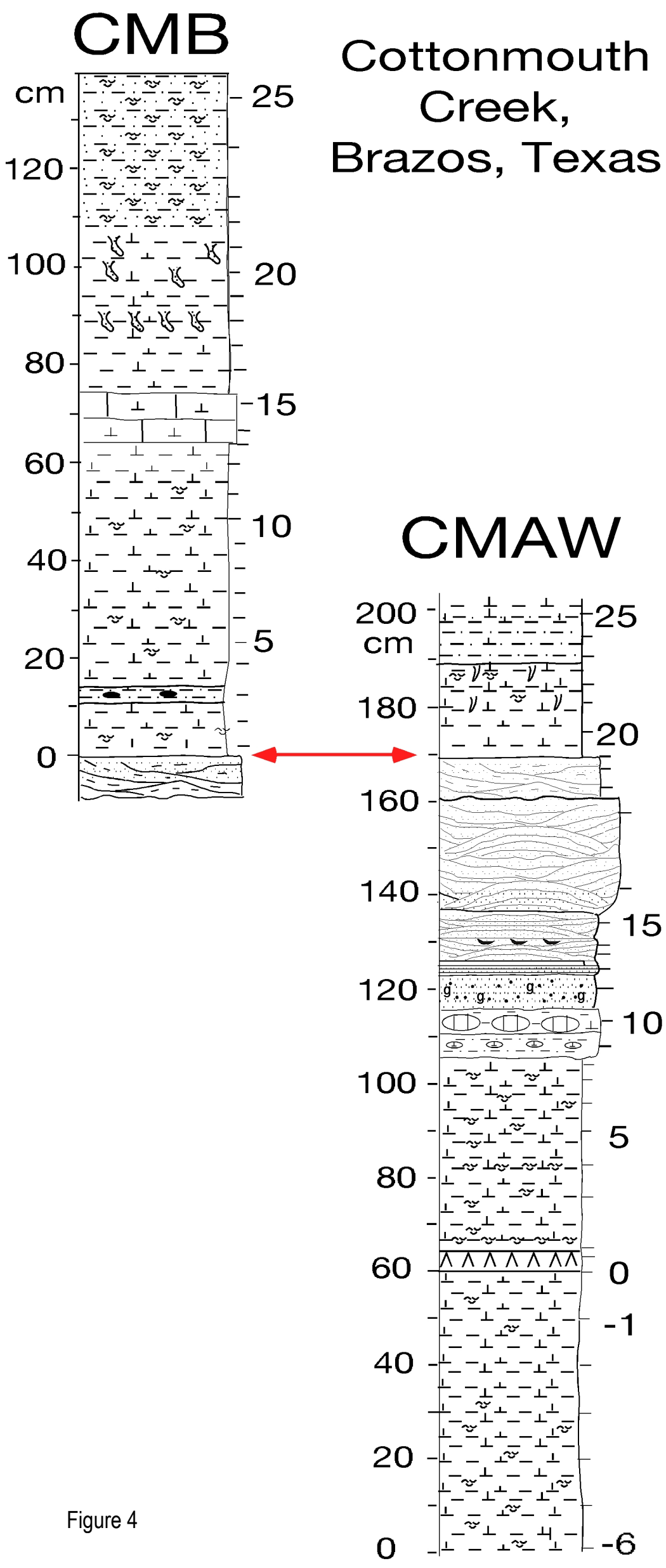
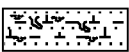
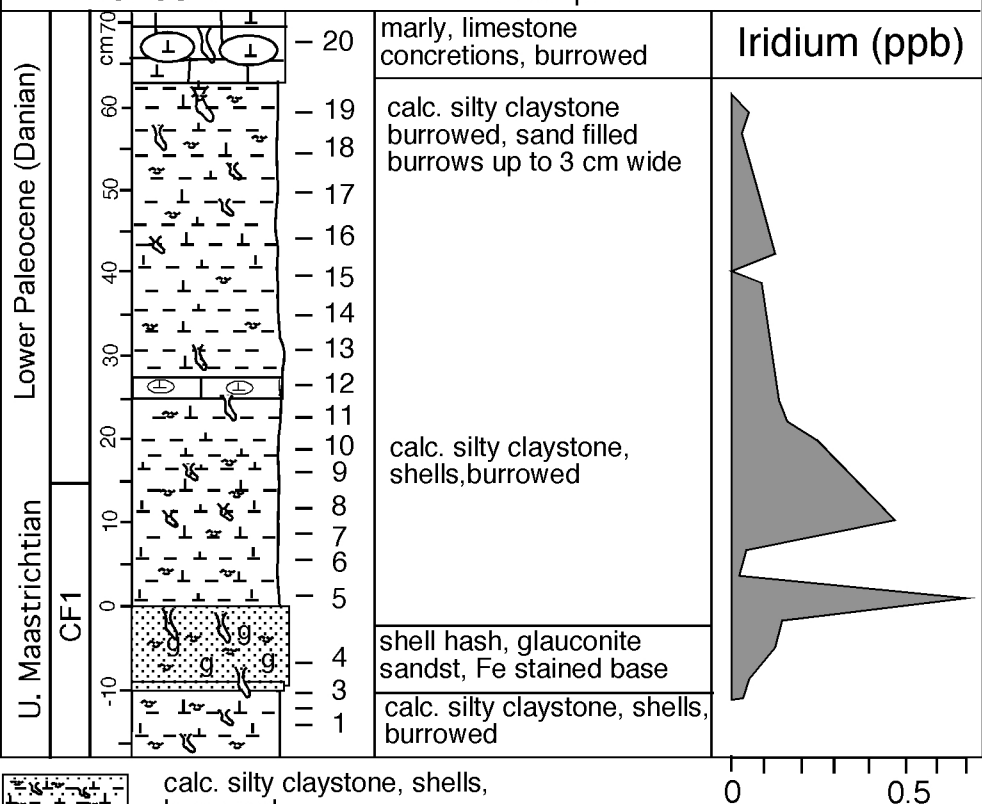


Figure 4

Brazos-3

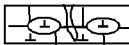
Description



calc. silty claystone, shells, burrowed



shell hash, glauconite, sandstone



limest. concretions

0

0.5

Figure 5